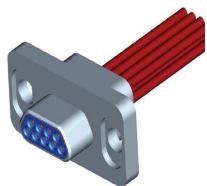
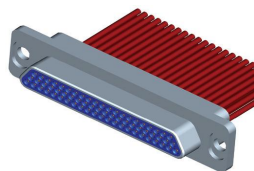


J29A crimp series

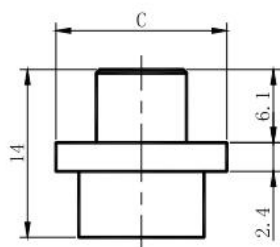
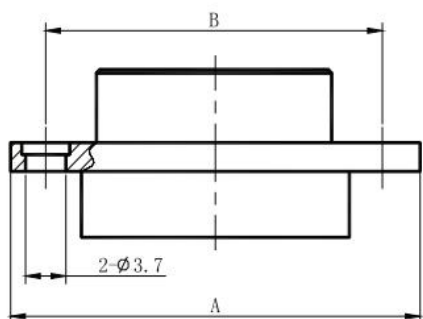
J29A-9, 15, 21, 25, 31, 37, 51, 66TJ



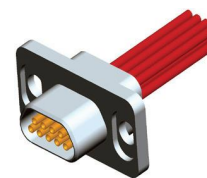
J29A-9TJ



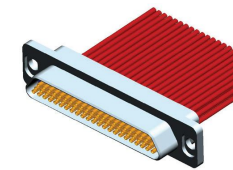
J29A-66TJ



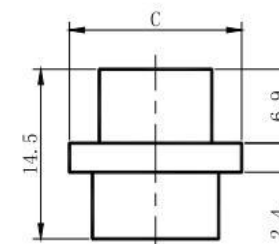
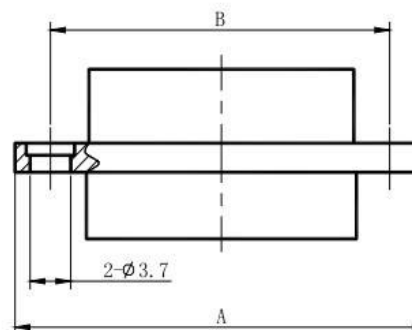
J29A-9, 15, 21, 25, 31, 37, 51, 66ZK



J29A-9ZK



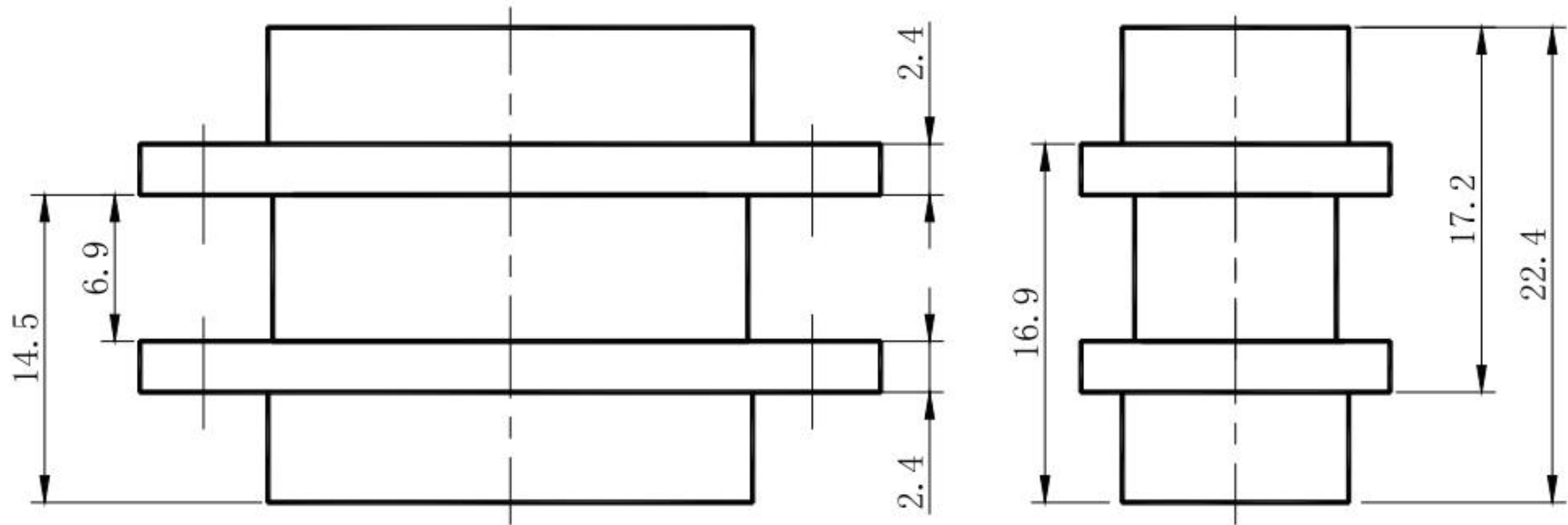
J29A-66ZK



Plug type	A	B	C
J29A-9TJ	26.1	20.1	13
J29A-15TJ	31.6	25.6	13
J29A-21TJ	37.3	31.3	13
J29A-25TJ	42	36	13
J29A-31TJ	47.8	41.8	13
J29A-37TJ	53.5	47.5	13
J29A-51TJ	52	46	14.6
J29A-66TJ	61.5	55.5	14.6

Receptacle type	A	B	C
J29A-9ZK	26.1	20.1	13
J29A-15ZK	31.6	25.6	13
J29A-21ZK	37.3	31.3	13
J29A-25ZK	42	36	13
J29A-31ZK	47.8	41.8	13
J29A-37ZK	53.5	47.5	13
J29A-51ZK	52	46	14.6
J29A-66ZK	61.5	55.5	14.6

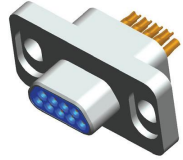
Size after mounting



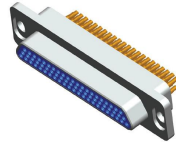
J29A-9、15、21、25、31、37、51、66TJ/ZK

J29A solder series

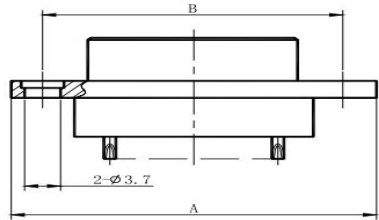
J29A-9、15、21、25、31、37、51、66TJH



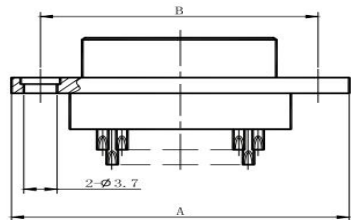
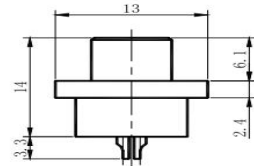
J29A-9TJH



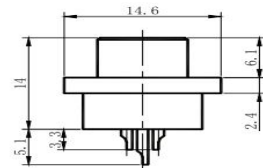
J29A-66TJH



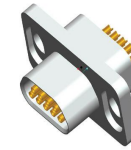
J29A-9、15、25、37TJH



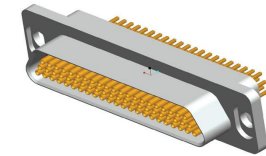
J29A-51、66TJH



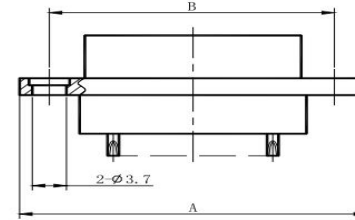
J29A-9、15、21、25、31、37、51、66ZKH



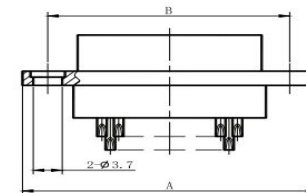
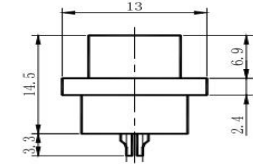
J29A-9ZKH



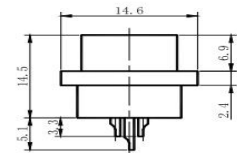
J29A-66ZKH



J29A-9、15、25、37ZKH



J29A-51、66ZKH



Plug type	A	B
J29A-9TJH	26.1	20.1
J29A-15TJH	31.6	25.6
J29A-25TJH	42	36
J29A-37TJH	53.5	47.5
J29A-51TJH	52	46
J29A-66TJH	61.5	55.5

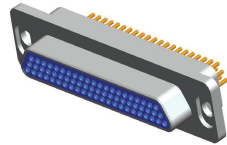
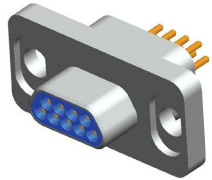
Receptacle type	A	B
J29A-9ZKH	26.1	20.1
J29A-15ZKH	31.6	25.6
J29A-25ZKH	42	36
J29A-37ZKH	53.5	47.5
J29A-51ZKH	52	46
J29A-66ZKH	61.5	55.5

J29A Stright PCB series

Grid spacing-1.91×1.65

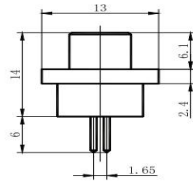
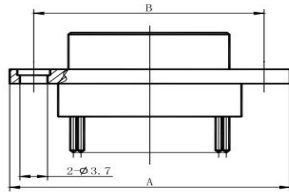
J29A-9、15、25、31、37、51、66TJN

J29A-9、15、25、31、37、51、66ZKN

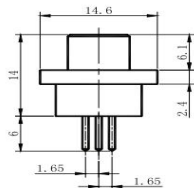
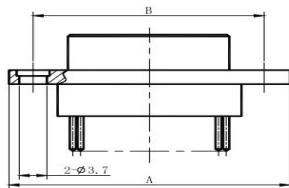


J29A-9TJN

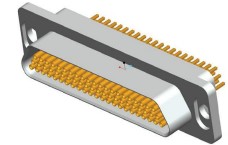
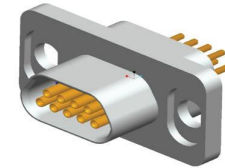
J29A-66TJN



J29A-9、15、25、37TJN

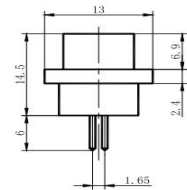
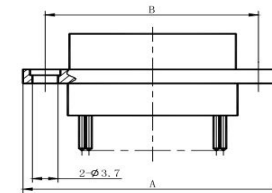


J29A-51、66TJN

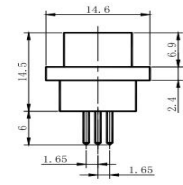
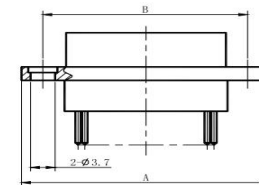


J29A-9ZKN

J29A-66ZKN



J29A-9、15、25、37ZKN



J29A-51、66ZKN

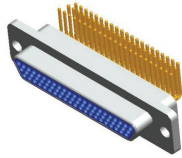
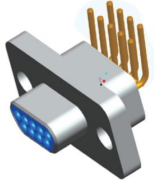
Plug type	A	B
J29A-9TJN	26.1	20.1
J29A-15TJN	31.6	25.6
J29A-25TJN	42	36
J29A-37TJN	53.5	47.5
J29A-51TJN	52	46
J29A-66TJN	61.5	55.5

Receptacle type	A	B
J29A-9ZKN	26.1	20.1
J29A-15ZKN	31.6	25.6
J29A-25ZKN	42	36
J29A-37ZKN	53.5	47.5
J29A-51ZKN	52	46
J29A-66ZKN	61.5	55.5

J29A 90° elbow PCB series

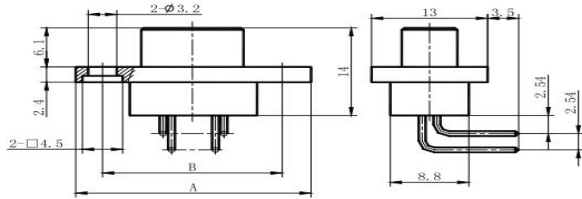
Grid spacing-1.91×2.54

J29A-9、15、25、31、37、51、66TJW

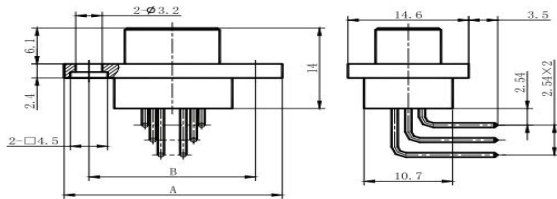


J29A-9TJW

J29A-66TJW



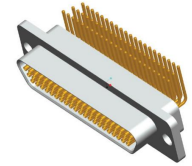
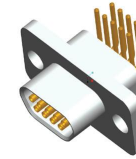
J29A-9、15、25、37TJW



J29A-51、66TJW

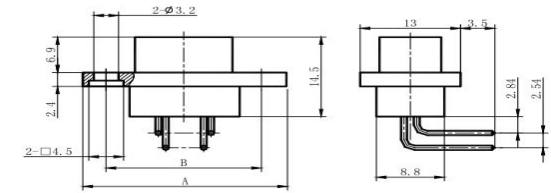
Plug type	A	B
J29A-9TJW	26.1	20.1
J29A-15TJW	31.6	25.6
J29A-25TJW	42	36
J29A-37TJW	53.5	47.5
J29A-51TJW	52	46
J29A-66TJW	61.5	55.5

J29A-9、15、25、31、37、51、66ZKW

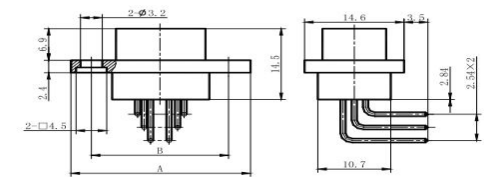


J29A-9ZKW

J29A-66ZKW



J29A-9、15、25、37ZKW



J29A-51、66ZKW

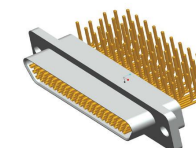
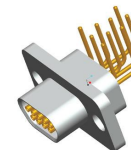
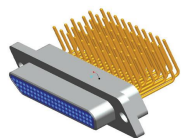
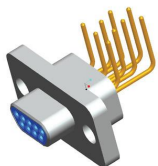
Receptacle type	A	B
J29A-9ZKW	26.1	20.1
J29A-15ZKW	31.6	25.6
J29A-25ZKW	42	36
J29A-37ZKW	53.5	47.5
J29A-51ZKW	52	46
J29A-66ZKW	61.5	55.5

J29A 90° elbow PCB W I series

Grid spacing-3.82×2.54

J29A-9、15、25、31、37、51、66TJW I

J29A-9、15、25、31、37、51、66ZKW I

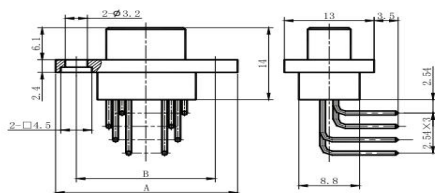


J29A-9TJW I

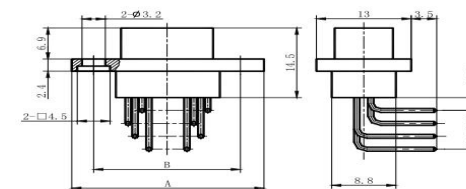
J29A-66TJW I

J29A-9TJW I

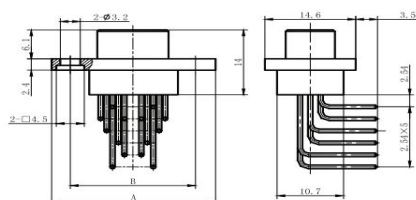
J29A-66TJW I



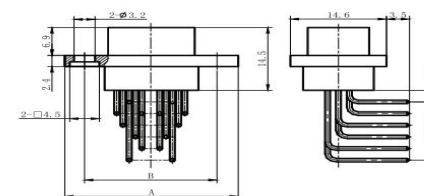
J29A-9、15、25、37TJW I



J29A-9、15、25、37ZKW I



J29A-51、66TJW I



J29A-51、66ZKW I

Plug type	A	B
J29A-9TJW I	26.1	20.1
J29A-15TJW I	31.6	25.6
J29A-25TJW I	42	36
J29A-37TJW I	53.5	47.5
J29A-51TJW I	52	46
J29A-66TJW I	61.5	55.5

Receptacle type	A	B
J29A-9ZKW I	26.1	20.1
J29A-15ZKW I	31.6	25.6
J29A-25ZKW I	42	36
J29A-37ZKW I	53.5	47.5
J29A-51ZKW I	52	46
J29A-66ZKW I	61.5	55.5