



INNOVATE / COOPERATION / WIN-WIN



**J29 SERIES
RECTANGLE ELECTRICAL CONNECTOR
PRODUCT INTRODUCTION**

www.Donconn.com

George@donconn.com

The J29 rectangular connector is an electrical connector that conforms to the United States Defense standard MIL-DTL-83513 specification and is commonly used in highly reliable military electronic equipment.

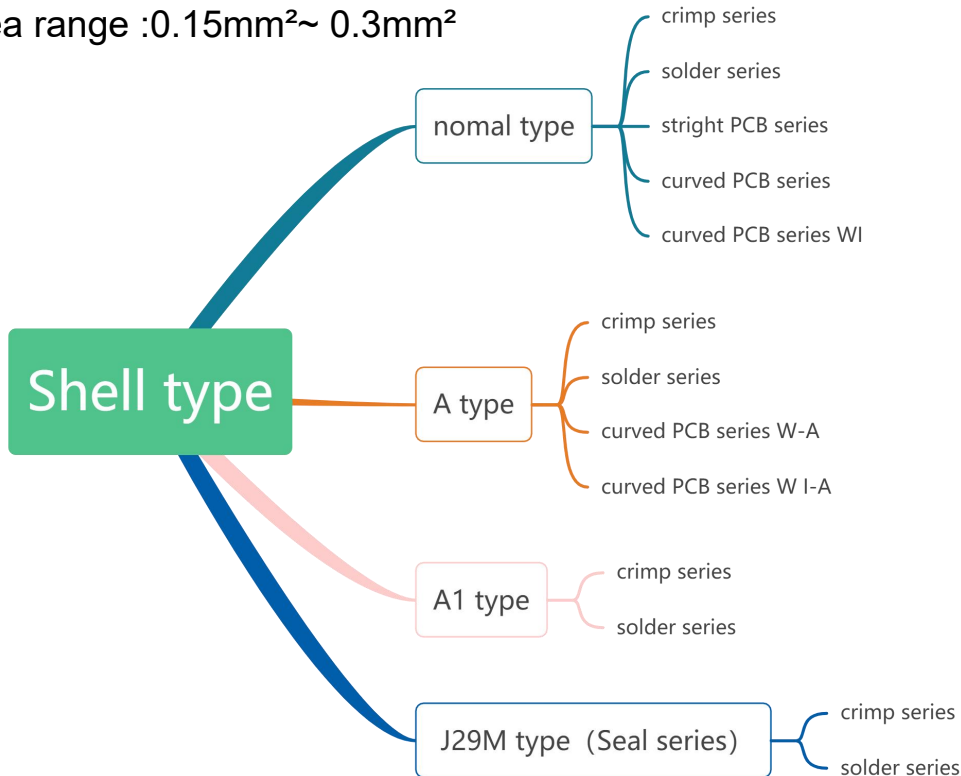
J29 rectangular connector with high density, high reliability, vibration resistance, shock resistance, radiation resistance and other characteristics, often used in aircraft, ships, tanks, missiles and other military fields of communication, radar, navigation, weapons control and other systems. It can be inserted and removed more than 500 times, can work in harsh environments, and has excellent water and dust resistance. Performance specification.

Features

Number of cores: There are 9, 15, 21, 25, 31, 37, 51, 66 core eight specifications using twisted elastic needle (twist needle),

The contact spacing is 1.91mm and the row spacing is 1.65mm

Conductor core cross-sectional area range :0.15mm²~ 0.3mm²



Performance specification

Temperature: -55 °C ~ +125 °C

Vibration: at 10Hz ~ 2000Hz, acceleration 200 m/s²

Shock: at 1200 m/s², 6ms

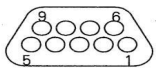
Rated current: 5 A

Contact resistance: ≤ 10 mΩ

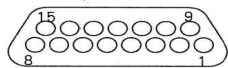
Insulation resistance: ≥ 5000 MΩ Dielectric strength: 1500V DC

Endurance: ≥ 500 cycles

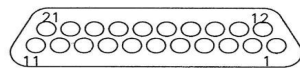
Contact layout



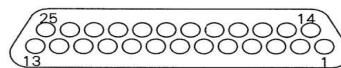
9



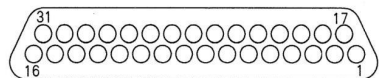
15



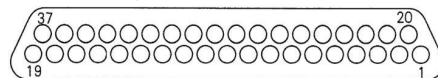
21



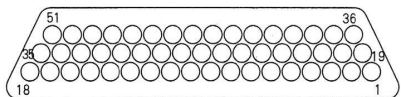
25



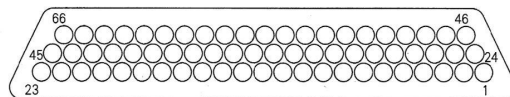
31



37



51



66

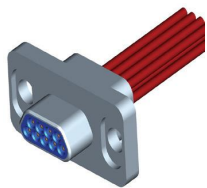
Explanation of Naming

	J29A	9	TJ	H	P	A	D
Basic series							
Contact number	9, 15, 21, 25, 31, 37, 51, 66						
Style	ZK = Receptacle with socket TJ = Plug with pin						
Type of termination	Omit = Crimp H = Solder N = Straight PCB W = 90° elbow PCB (1.91×2.54) WI = 90° elbow PCB (3.82×2.54)						
Locking components	L = Unfixed (L, L ₁ , L ₂ , L ₃ , L ₄) P = Fixed (P, P ₁ , P ₂ , P ₃ ,P ₁₆)						
Type of shell	Omit = Normal A = Width of flange is same as back shell A ₁ = Width of flange is between normal and A						
Type of tail cover	D, D1, D2						

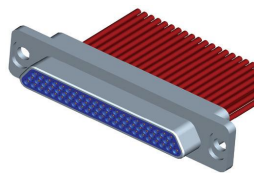
	J29M	9	TJ	H	P ₅
Basic series					
Contact number	9, 15, 21, 25, 31, 37, 51, 66				
Style	ZK = Receptacle with socket TJ = Plug with pin				
Type of termination	Omit = Crimp H = Solder				
Locking components	Only P ₅				

J29A crimp series

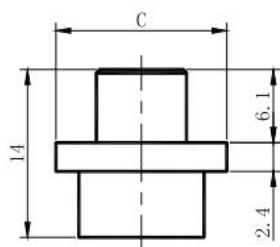
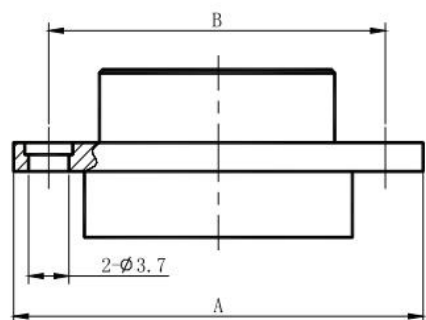
J29A-9, 15, 21, 25, 31, 37, 51, 66TJ



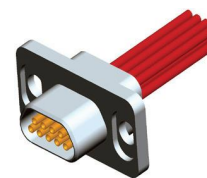
J29A-9TJ



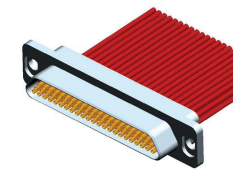
J29A-66TJ



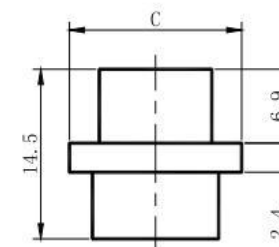
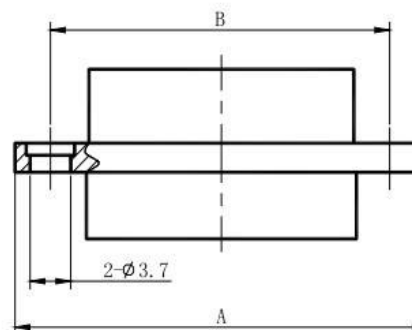
J29A-9, 15, 21, 25, 31, 37, 51, 66ZK



J29A-9ZK



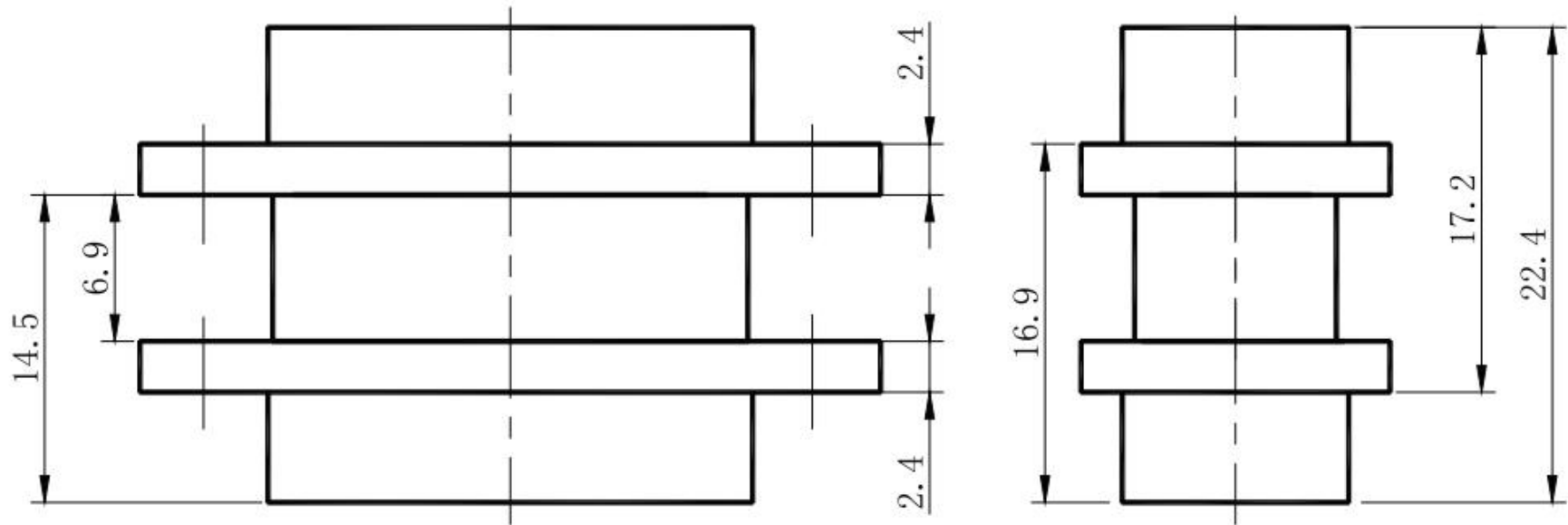
J29A-66ZK



Plug type	A	B	C
J29A-9TJ	26.1	20.1	13
J29A-15TJ	31.6	25.6	13
J29A-21TJ	37.3	31.3	13
J29A-25TJ	42	36	13
J29A-31TJ	47.8	41.8	13
J29A-37TJ	53.5	47.5	13
J29A-51TJ	52	46	14.6
J29A-66TJ	61.5	55.5	14.6

Receptacle type	A	B	C
J29A-9ZK	26.1	20.1	13
J29A-15ZK	31.6	25.6	13
J29A-21ZK	37.3	31.3	13
J29A-25ZK	42	36	13
J29A-31ZK	47.8	41.8	13
J29A-37ZK	53.5	47.5	13
J29A-51ZK	52	46	14.6
J29A-66ZK	61.5	55.5	14.6

Size after mounting

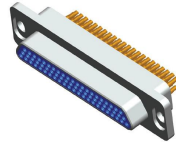
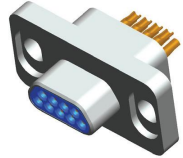


J29A-9、15、21、25、31、37、51、66TJ/ZK

J29A solder series

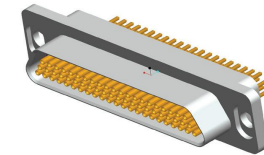
J29A-9、15、21、25、31、37、51、66TJH

J29A-9、15、21、25、31、37、51、66ZKH



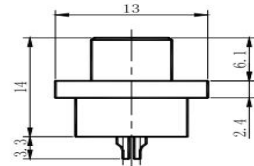
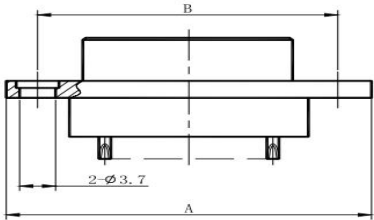
J29A-9TJH

J29A-66TJH

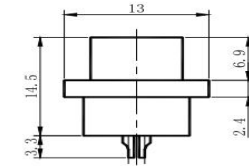
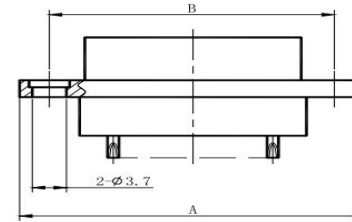


J29A-9ZKH

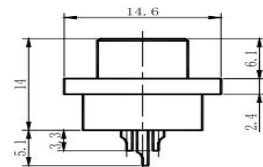
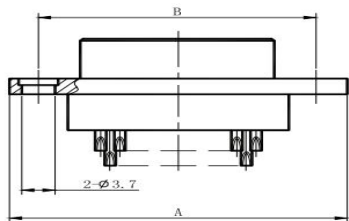
J29A-66ZKH



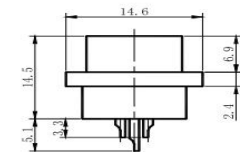
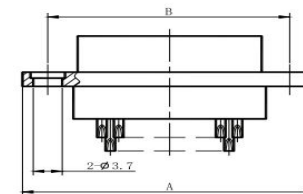
J29A-9、15、25、37TJH



J29A-9、15、25、37ZKH



J29A-51、66TJH



J29A-51、66ZKH

Plug type	A	B
J29A-9TJH	26.1	20.1
J29A-15TJH	31.6	25.6
J29A-25TJH	42	36
J29A-37TJH	53.5	47.5
J29A-51TJH	52	46
J29A-66TJH	61.5	55.5

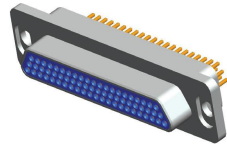
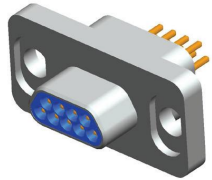
Receptacle type	A	B
J29A-9ZKH	26.1	20.1
J29A-15ZKH	31.6	25.6
J29A-25ZKH	42	36
J29A-37ZKH	53.5	47.5
J29A-51ZKH	52	46
J29A-66ZKH	61.5	55.5

J29A Stright PCB series

Grid spacing-1.91×1.65

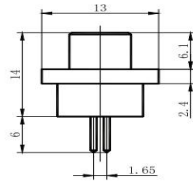
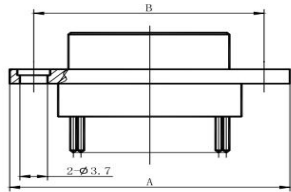
J29A-9、15、25、31、37、51、66TJN

J29A-9、15、25、31、37、51、66ZKN

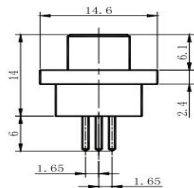
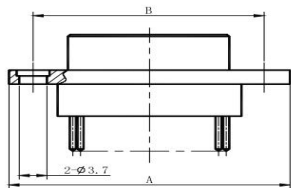


J29A-9TJN

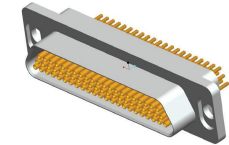
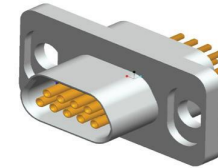
J29A-66TJN



J29A-9、15、25、37TJN

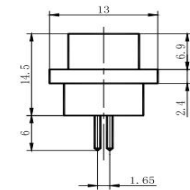
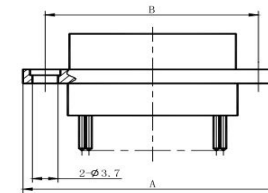


J29A-51、66TJN

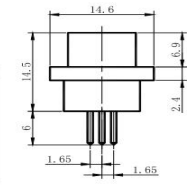
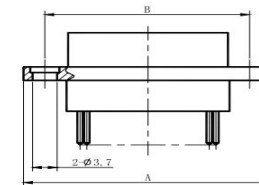


J29A-9ZKN

J29A-66ZKN



J29A-9、15、25、37ZKN



J29A-51、66ZKN

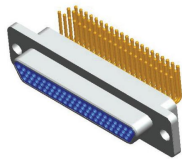
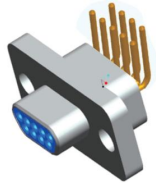
Plug type	A	B
J29A-9TJN	26.1	20.1
J29A-15TJN	31.6	25.6
J29A-25TJN	42	36
J29A-37TJN	53.5	47.5
J29A-51TJN	52	46
J29A-66TJN	61.5	55.5

Receptacle type	A	B
J29A-9ZKN	26.1	20.1
J29A-15ZKN	31.6	25.6
J29A-25ZKN	42	36
J29A-37ZKN	53.5	47.5
J29A-51ZKN	52	46
J29A-66ZKN	61.5	55.5

J29A 90° elbow PCB series

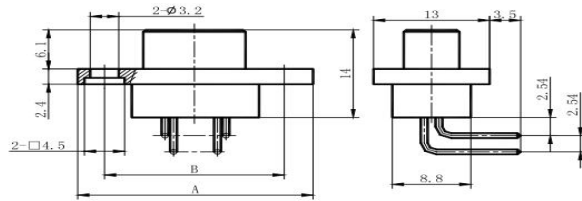
Grid spacing-1.91×2.54

J29A-9、15、25、31、37、51、66TJW

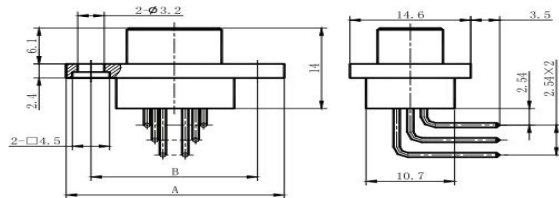


J29A-9TJW

J29A-66TJW



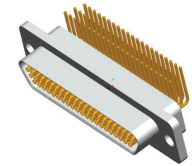
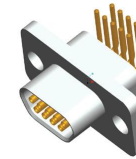
J29A-9、15、25、37TJW



J29A-51、66TJW

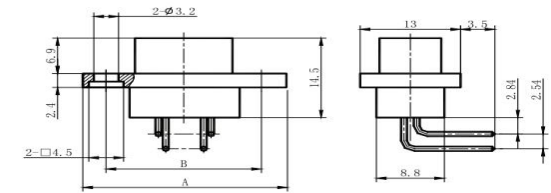
Plug type	A	B
J29A-9TJW	26.1	20.1
J29A-15TJW	31.6	25.6
J29A-25TJW	42	36
J29A-37TJW	53.5	47.5
J29A-51TJW	52	46
J29A-66TJW	61.5	55.5

J29A-9、15、25、31、37、51、66ZKW

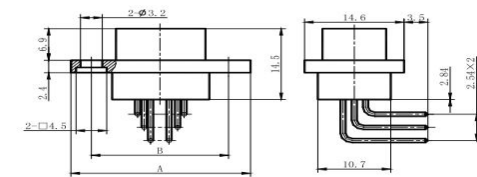


J29A-9ZKW

J29A-66ZKW



J29A-9、15、25、37ZKW



J29A-51、66ZKW

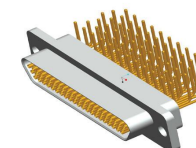
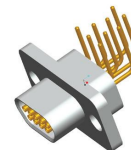
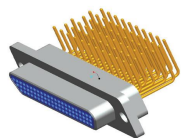
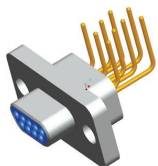
Receptacle type	A	B
J29A-9ZKW	26.1	20.1
J29A-15ZKW	31.6	25.6
J29A-25ZKW	42	36
J29A-37ZKW	53.5	47.5
J29A-51ZKW	52	46
J29A-66ZKW	61.5	55.5

J29A 90° elbow PCB W I series

Grid spacing-3.82×2.54

J29A-9、15、25、31、37、51、66TJW I

J29A-9、15、25、31、37、51、66ZKW I

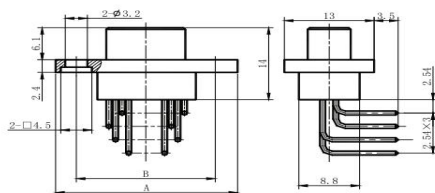


J29A-9TJW I

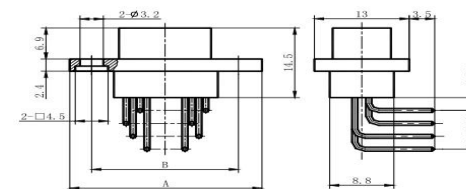
J29A-66TJW I

J29A-9TJW I

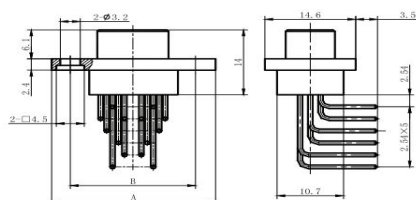
J29A-66TJW I



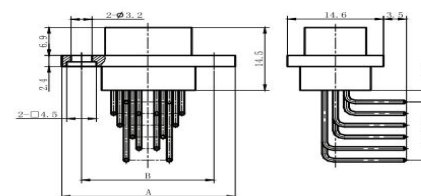
J29A-9、15、25、37TJW I



J29A-9、15、25、37ZKW I



J29A-51、66TJW I



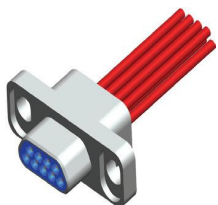
J29A-51、66ZKW I

Plug type	A	B
J29A-9TJW I	26.1	20.1
J29A-15TJW I	31.6	25.6
J29A-25TJW I	42	36
J29A-37TJW I	53.5	47.5
J29A-51TJW I	52	46
J29A-66TJW I	61.5	55.5

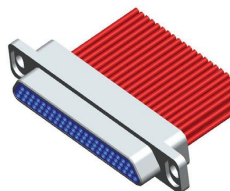
Receptacle type	A	B
J29A-9ZKW I	26.1	20.1
J29A-15ZKW I	31.6	25.6
J29A-25ZKW I	42	36
J29A-37ZKW I	53.5	47.5
J29A-51ZKW I	52	46
J29A-66ZKW I	61.5	55.5

J29A-A type crimp series

J29A-9、15、25、37、51、66TJ-A

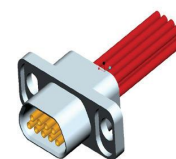


J29A-9YJ-A

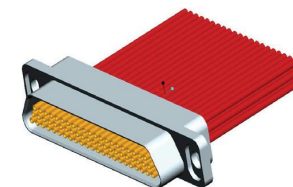


J29A-66TJ-A

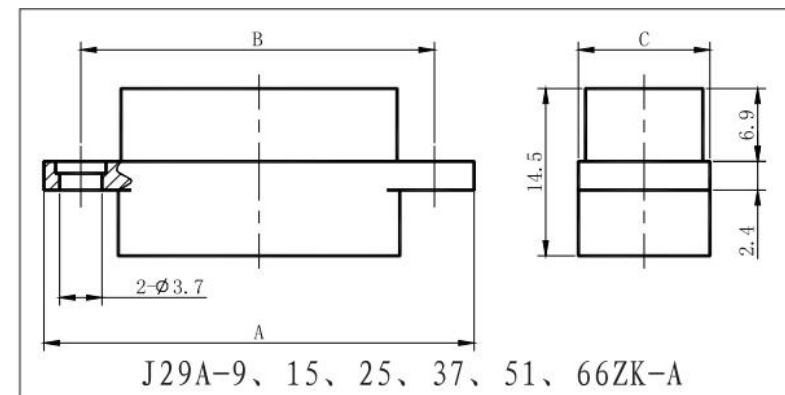
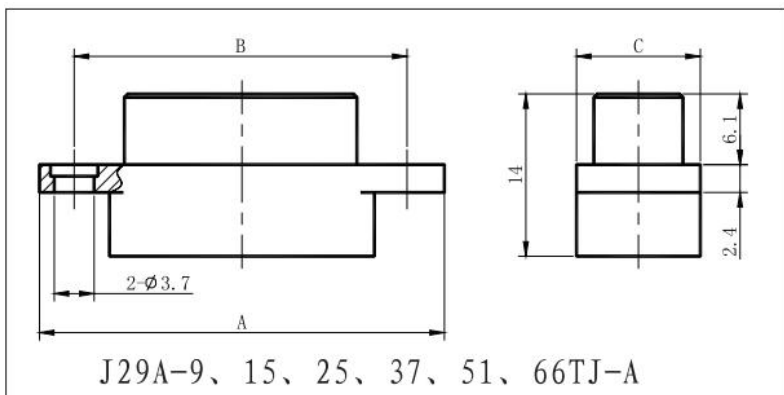
J29A-9、15、25、37、51、66ZK-A



J29A-9ZK-A



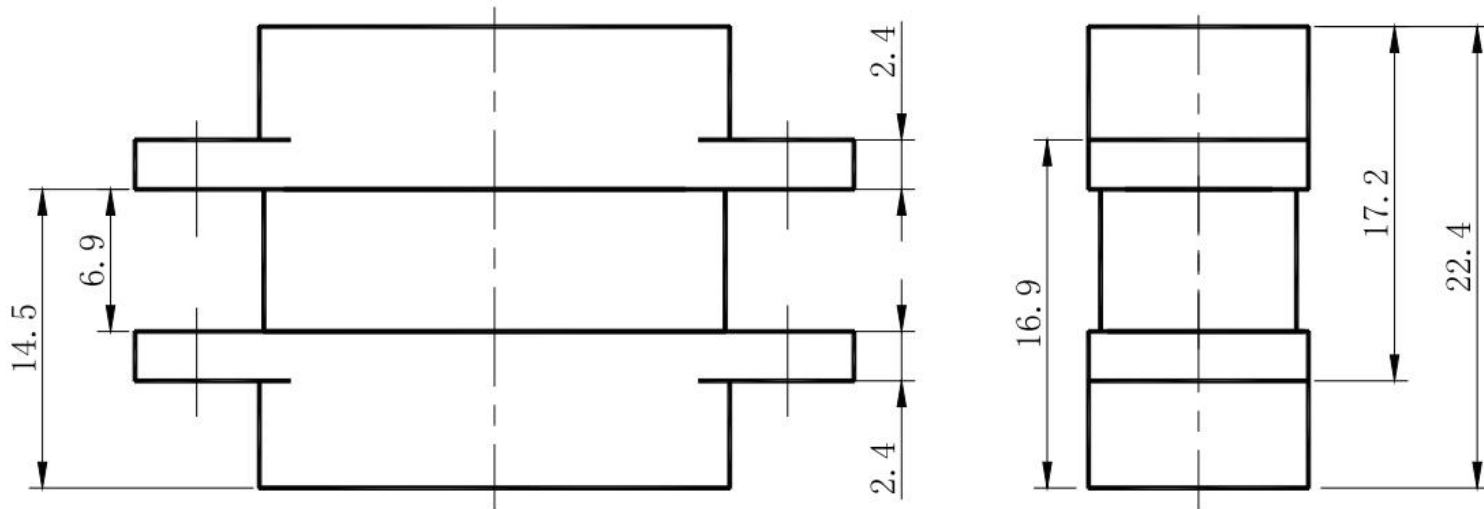
J29A-66ZK-A



plug type	A	B	C
J29A-9TJ-A	26.1	20.1	8.8
J29A-15TJ-A	31.6	25.6	8.8
J29A-25TJ-A	42	36	8.8
J29A-37TJ-A	53.5	47.5	8.8
J29A-51TJ-A	52	46	10.7
J29A-66TJ-A	61.5	55.5	10.7

Receptacle type	A	B	C
J29A-9ZK-A	26.1	20.1	8.8
J29A-15ZK-A	31.6	25.6	8.8
J29A-25ZK-A	42	36	8.8
J29A-37ZK-A	53.5	47.5	8.8
J29A-51ZK-A	52	46	10.7
J29A-66ZK-A	61.5	55.5	10.7

Size after mounting



J29A-9、 15、 25、 37、 51、 66TJ-A/ZK-A

J29A-A type solder series

J29A-9、15、25、37、51、66TJH-A



J29A-9YJH-A

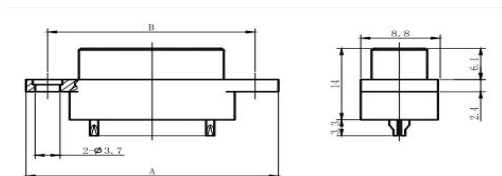
J29A-66TJH-A

J29A-9、15、25、37、51、66ZKH-A

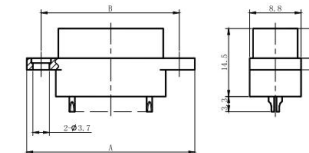


J29A-9ZKH-A

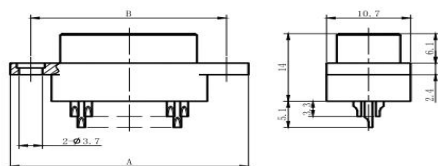
J29A-66ZKH-A



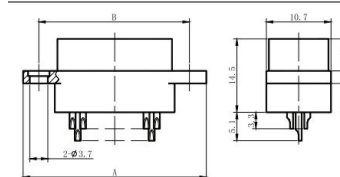
J29A-9、15、25、37TJH-A



J29A-9、15、25、37ZKH-A



J29A-51、66TJH-A



J29A-51、66ZKH-A

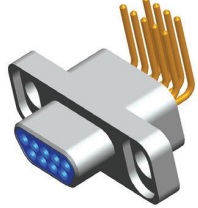
plug type	A	B
J29A-9TJH-A	26.1	20.1
J29A-15TJH-A	31.6	25.6
J29A-25TJH-A	42	36
J29A-37TJH-A	53.5	47.5
J29A-51TJH-A	52	46
J29A-66TJH-A	61.5	55.5

Receptacle type	A	B
J29A-9ZKH-A	26.1	20.1
J29A-15ZKH-A	31.6	25.6
J29A-25ZKH-A	42	36
J29A-37ZKH-A	53.5	47.5
J29A-51ZKH-A	52	46
J29A-66ZKH-A	61.5	55.5

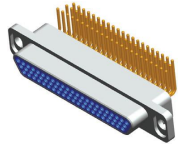
J29A-A 90° elbow PCB series

Grid spacing-1.91×2.54

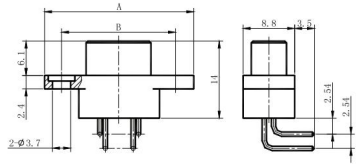
J29A-9、15、25、31、37、51、66TJW-A



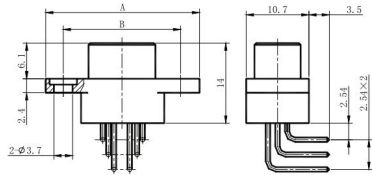
J29A-9TJW-A



J29A-66TJW-A



J29A-9、15、25、37TJW-A

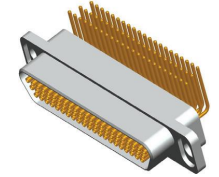


J29A-51、66TJW-A

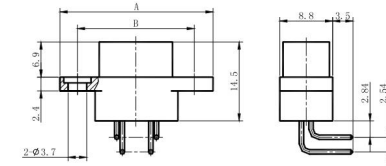
J29A-9、15、25、31、37、51、66ZKW-A



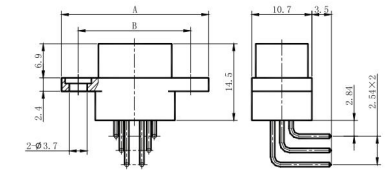
J29A-9ZKW-A



J29A-66ZKW-A



J29A-9、15、25、37ZKW-A



J29A-51、66ZKW-A

Plug type	A	B
J29A-9TJW-A	26.1	20.1
J29A-15TJW-A	31.6	25.6
J29A-25TJW-A	42	36
J29A-37TJW-A	53.5	47.5
J29A-51TJW-A	52	46
J29A-66TJW-A	61.5	55.5

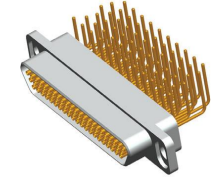
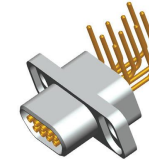
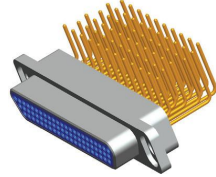
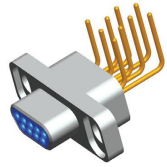
Receptacle type	A	B
J29A-9ZKW-A	26.1	20.1
J29A-15ZKW-A	31.6	25.6
J29A-25ZKW-A	42	36
J29A-37ZKW-A	53.5	47.5
J29A-51ZKW-A	52	46
J29A-66ZKW-A	61.5	55.5

J29A-A 90° elbow PCB W I series

Grid spacing-3.82×2.54

J29A-9、15、25、31、37、51、66TJW I -A

J29A-9、15、25、31、37、51、66ZKW I -A

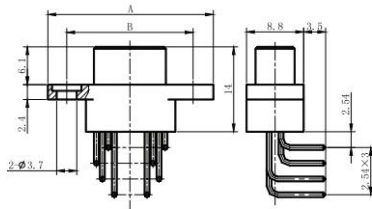


J29A-9TJW I -A

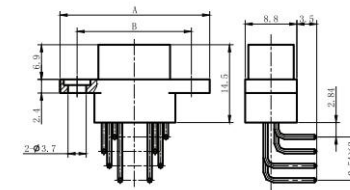
J29A-66TJW I -A

J29A-9ZKW I -A

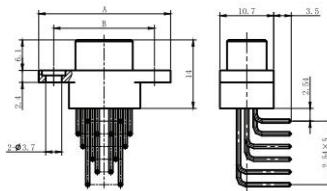
J29A-66ZKW I -A



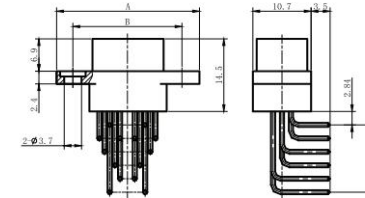
J29A-9、15、25、37TJW I -A



J29A-9、15、25、37ZKW I -A



J29A-51、66TJW I -A



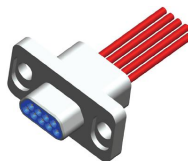
J29A-51、66ZKW I -A

Plug type	A	B
J29A-9TJW I -A	26.1	20.1
J29A-15TJW I -A	31.6	25.6
J29A-25TJW I -A	42	36
J29A-37TJW I -A	53.5	47.5
J29A-51TJW I -A	52	46
J29A-66TJW I -A	61.5	55.5

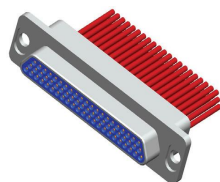
Receptacle type	A	B
J29A-9ZKW I -A	26.1	20.1
J29A-15ZKW I -A	31.6	25.6
J29A-25ZKW I -A	42	36
J29A-37ZKW I -A	53.5	47.5
J29A-51ZKW I -A	52	46
J29A-66ZKW I -A	61.5	55.5

J29A-A1 type crimp series

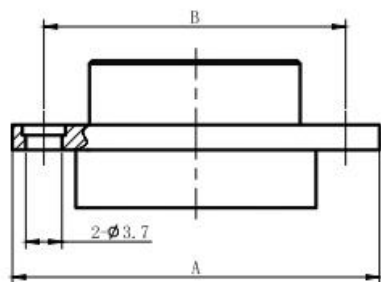
J29A-9、15、25、37、51、66TJ-A



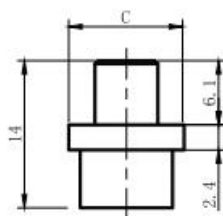
J29A-9YJ-A1



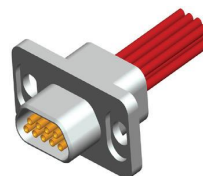
J29A-66TJ-A1



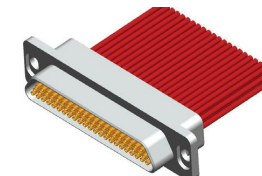
J29A-25、37、51TJ-A1



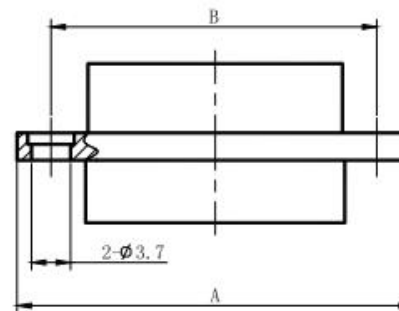
J29A-9、15、25、37、51、66ZK-A



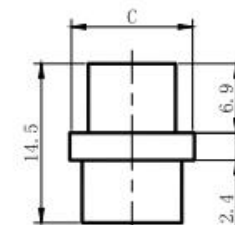
J29A-9ZK-A1



J29A-66ZK-A1



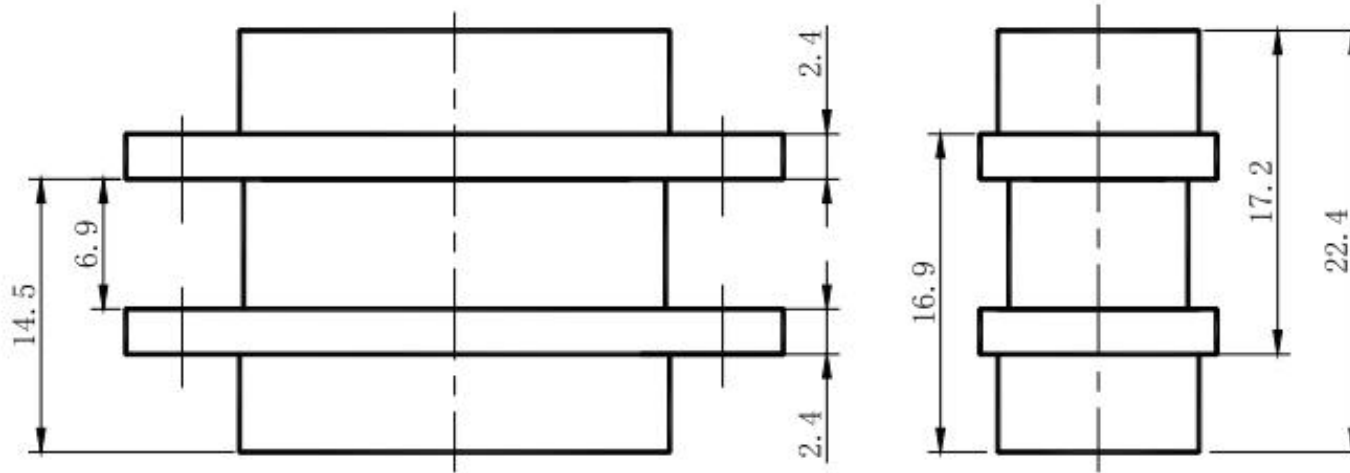
J29A-25、37、51ZK-A1



Plug type	A	B	C
J29A-9TJ-A1	26.1	20.1	11
J29A-15TJ-A1	31.6	25.6	11
J29A-25TJ-A	42	36	11
J29A-37TJ-A	53.5	47.5	11
J29A-51TJ-A	52	46	12.6
J29A-66TJ-A	61.5	55.5	12.6

Receptacle type	A	B	C
J29A-9ZK-A1	26.1	20.1	11
J29A-15ZK-A1	31.6	25.6	11
J29A-25ZK-A1	42	36	11
J29A-37ZK-A1	53.5	47.5	11
J29A-51ZK-A1	52	46	12.6
J29A-66ZK-A1	61.5	55.5	12.6

Size after mounting



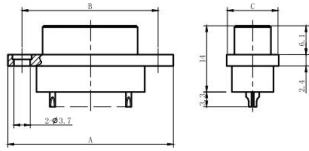
J29A-A1 type solder series

J29A-9、15、25、37、51、66TJH-A1

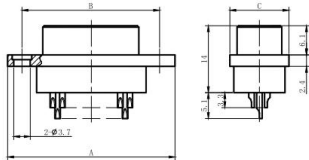


J29A-9YJH-A1

J29A-66TJH-A1



J29A-25、37TJH-A1



J29A-51TJH-A1

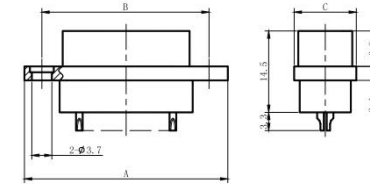
Plug type	A	B	C
J29A-9TJH-A1	26.1	20.1	11
J29A-15TJH-A1	31.6	25.6	11
J29A-25TJH-A	42	36	11
J29A-37TJH-A	53.5	47.5	11
J29A-51TJH-A	52	46	12.6
J29A-66TJH-A	61.5	55.5	12.6

J29A-9、15、25、37、51、66ZKH-A1

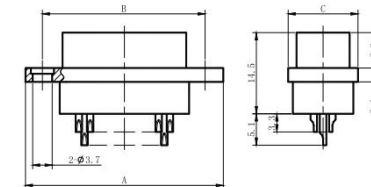


J29A-9ZKH-A1

J29A-66ZKH-A1



J29A-25、37ZKH-A1

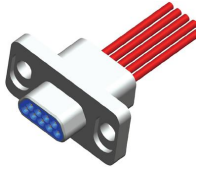
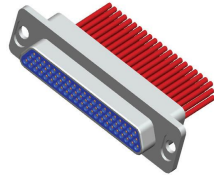
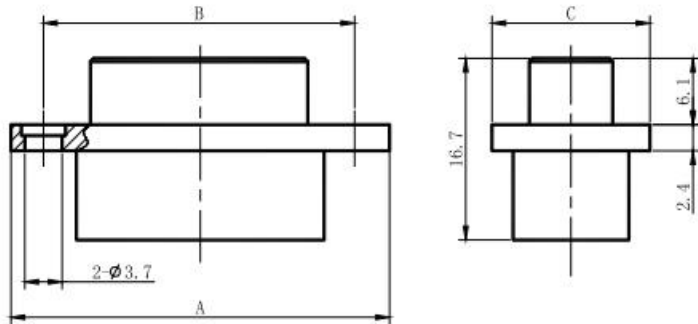


J29A-51ZKH-A1

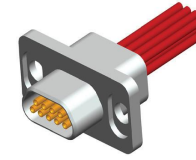
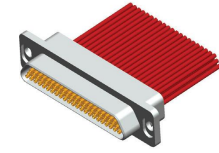
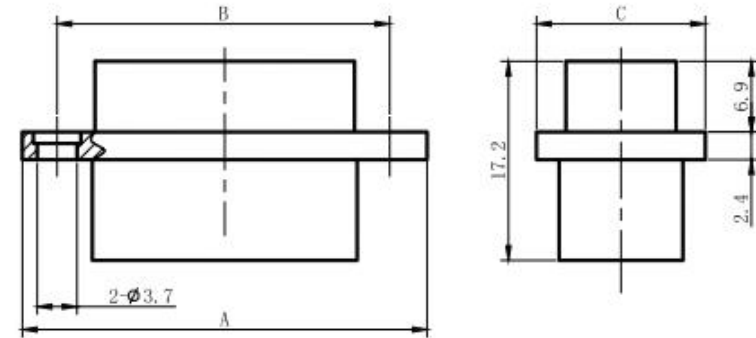
Receptacle type	A	B	C
J29A-9ZKH-A1	26.1	20.1	11
J29A-15ZKH-A1	31.6	25.6	11
J29A-25ZKH-A1	42	36	11
J29A-37ZKH-A1	53.5	47.5	11
J29A-51ZKH-A1	52	46	12.6
J29A-66ZKH-A1	61.5	55.5	12.6

J29M crimp series

J29M-9, 15, 25, 37, 51, 66TJ


J29A-9TJ

J29A-66TJ


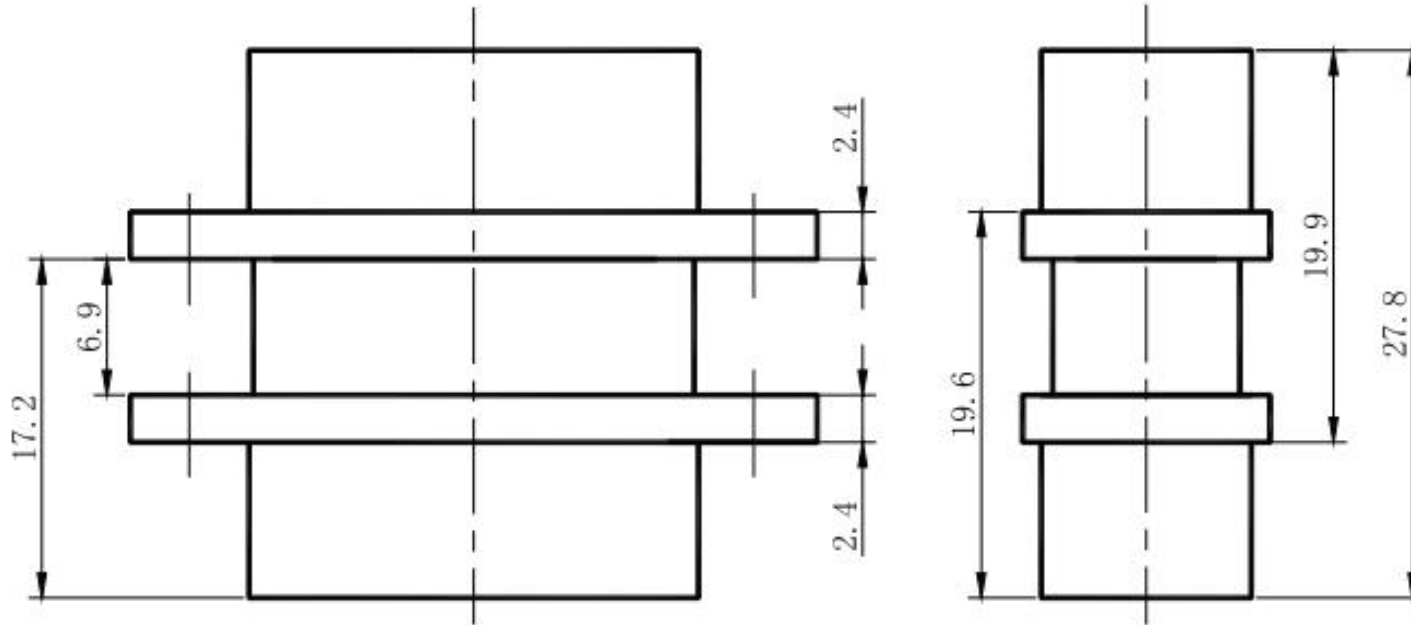
J29M-9, 15, 25, 37, 51, 66ZK


J29A-9ZK

J29A-66ZK


Plug type	A	B	C
J29M-9TJ	26.1	20.1	13
J29M-15TJ	31.6	25.6	13
J29M-25TJ	42	36	13
J29M-37TJ	53.5	47.5	13
J29M-51TJ	52	46	14.6
J29M-66TJ	61.5	55.5	14.6

Receptacle type	A	B	C
J29M-9ZK	26.1	20.1	13
J29M-15ZK	31.6	25.6	13
J29M-25ZK	42	36	13
J29M-37ZK	53.5	47.5	13
J29M-51ZK	52	46	14.6
J29M-66ZK	61.5	55.5	14.6

Size after mounting

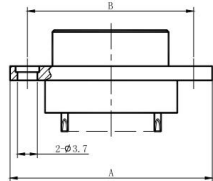


J29M solder series

J29M-9、15、25、37、51、66TJH

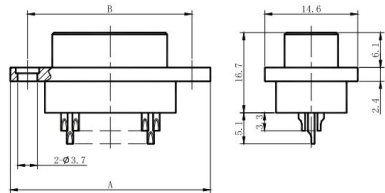
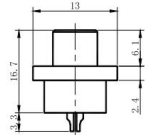


J29A-9TJH



J29M-9、15、25、37TJH

J29A-66TJH

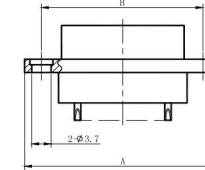


J29M-51、66TJH

J29M-9、15、25、37、51、66ZKH

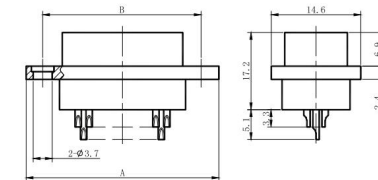
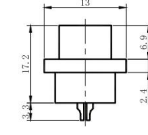


J29A-9ZKH



J29M-9、15、25、37ZKH

J29A-66ZKH



J29M-51、66ZKH

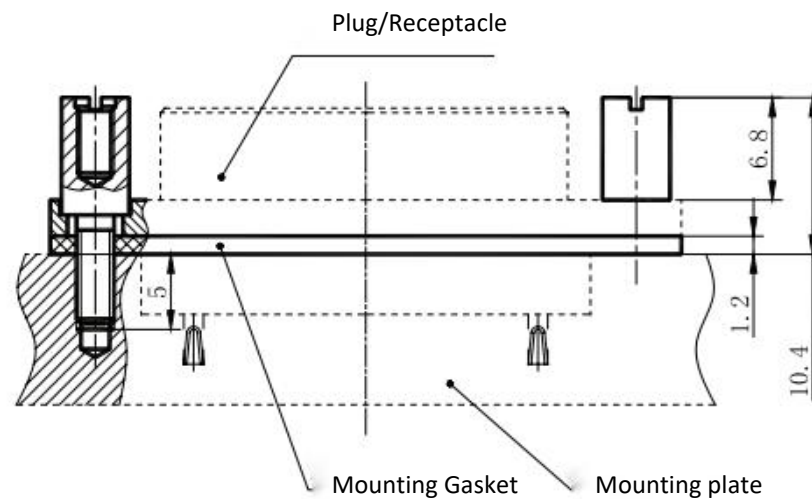
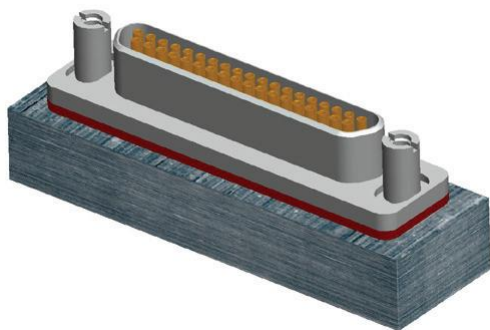
Plug type	A	B
J29M-9TJH	26.1	20.1
J29M-15TJH	31.6	25.6
J29M-25TJH	42	36
J29M-37TJH	53.5	47.5
J29M-51TJH	52	46
J29M-66TJH	61.5	55.5

Receptacle type	A	B
J29M-9ZKH	26.1	20.1
J29M-15ZKH	31.6	25.6
J29M-25ZKH	42	36
J29M-37ZKH	53.5	47.5
J29M-51ZKH	52	46
J29M-66ZKH	61.5	55.5

J29 Series locking accessories

P12 type locking accessories

P12 type locking accessories is mainly used for plate front installation
 interface sealing function
 thread depth > 5mm



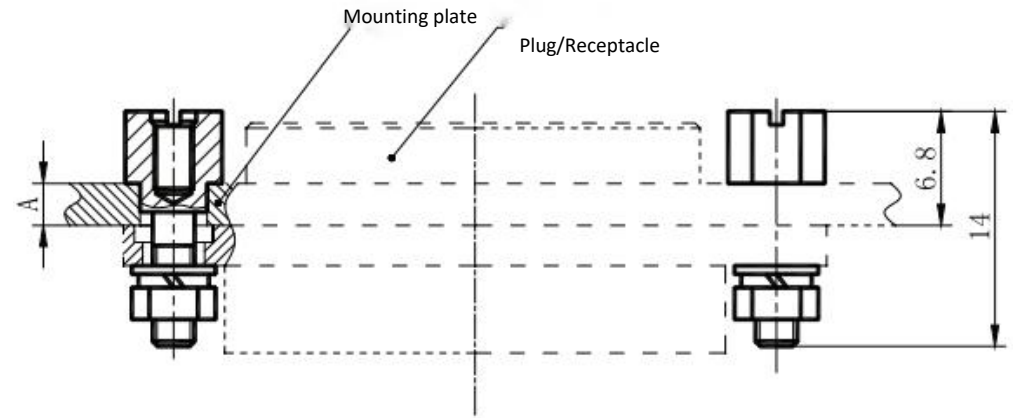
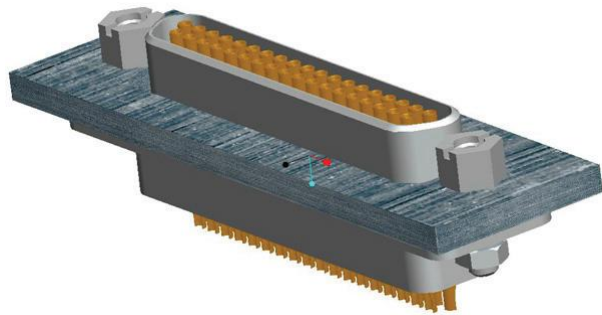
Type	Co-use type
P12	L,L1,L3,L4

J29 Series locking accessories

P14,P16 type locking accessories

P14 is suitable for the crimp and solder series of plate rear mounting . The mounting plate thickness is 2~ 2.5mm.

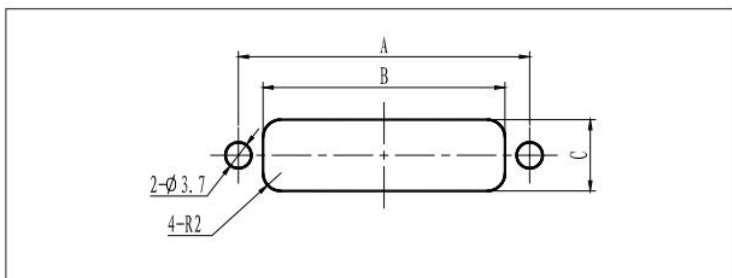
P16 is suitable for the crimp and solder series of plate rear mounting . The mounting plate thickness is 1~ 1.5mm.



Type	Co-use type	A
P14	L,L1,L3,L4	2~ 2.5
P16	L,L1,L3,L4	1~ 1.5

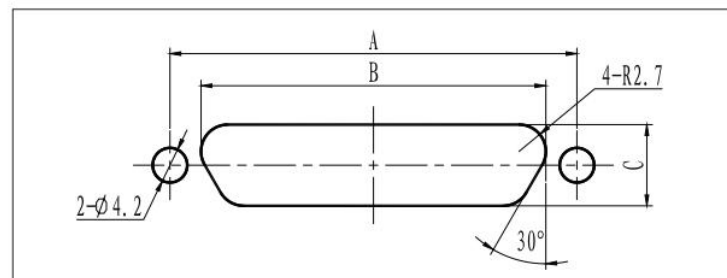
J29A series mounting plate dimensions

Dimensions (Front mounting)

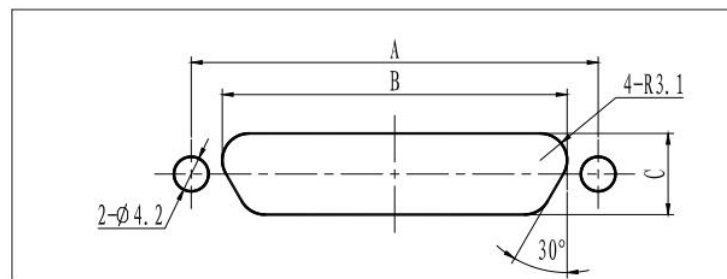


Type	A	B	C
J29A-9	20.1	14.4	9
J29A-15	25.6	19.9	9
J29A-21	31.3	25.6	9
J29A-25	36	30.1	9
J29A-31	41.8	35.9	9
J29A-37	47.5	41.6	9
J29A-51	46	40.1	10.9
J29A-66	55.5	49.6	10.9

Dimensions (rear mounting)



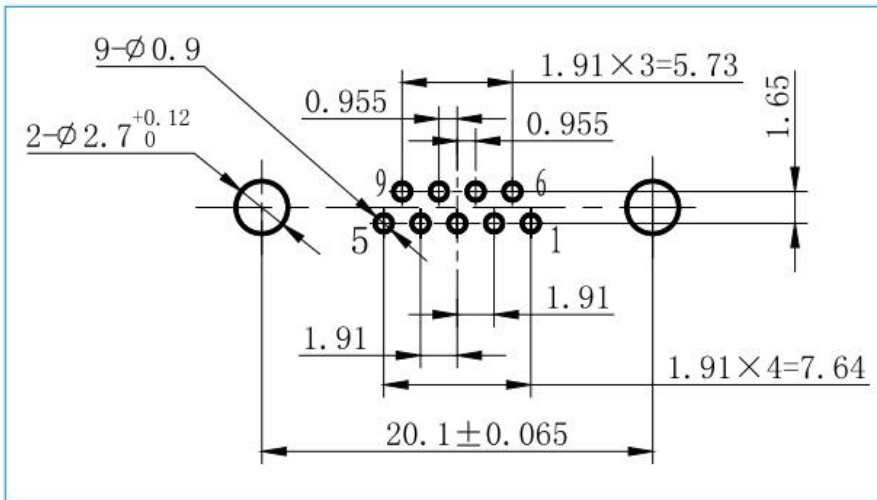
Type	A	B	C
J29A-9	20.1	13.3	7
J29A-15	25.6	18.8	7
J29A-21	31.3	24.5	7



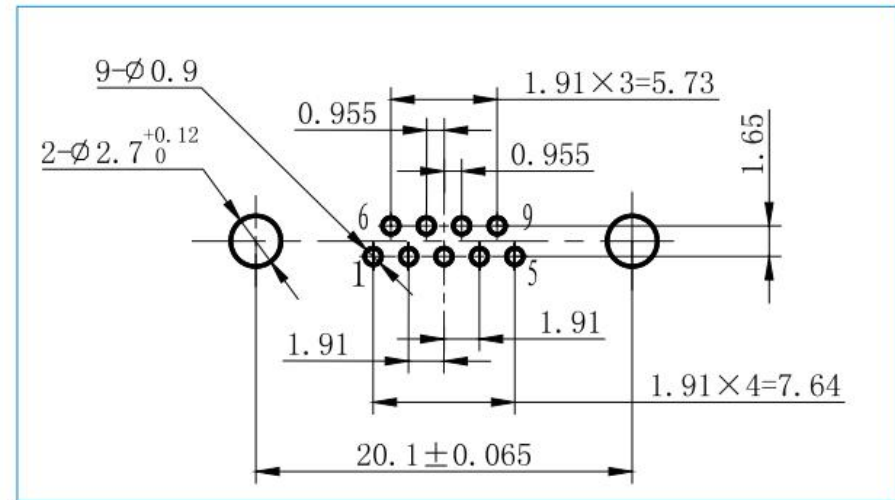
Type	A	B	C
J29A-25	36	29.2	7.9
J29A-31	41.8	35	7.9
J29A-37	47.5	40.7	7.9
J29A-51	46	39.2	9.6
J29A-66	55.5	48.7	9.6

J29 PCB Hole dimensions

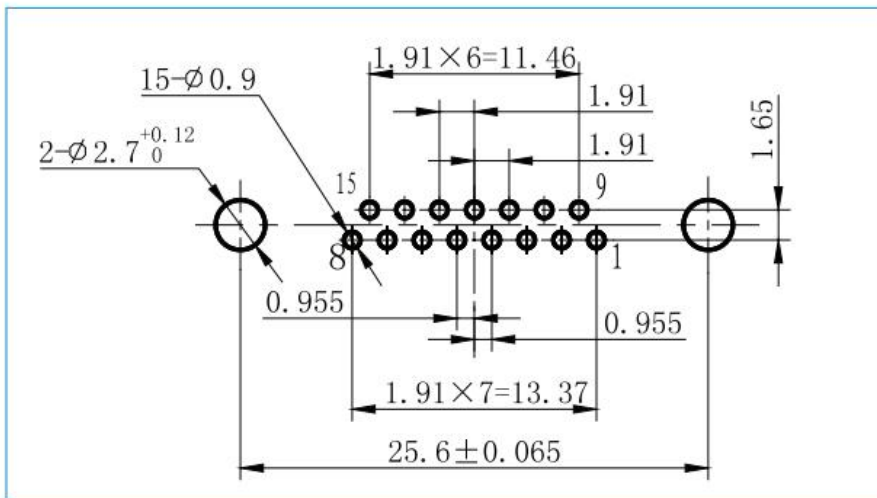
■ J29A-9TJN



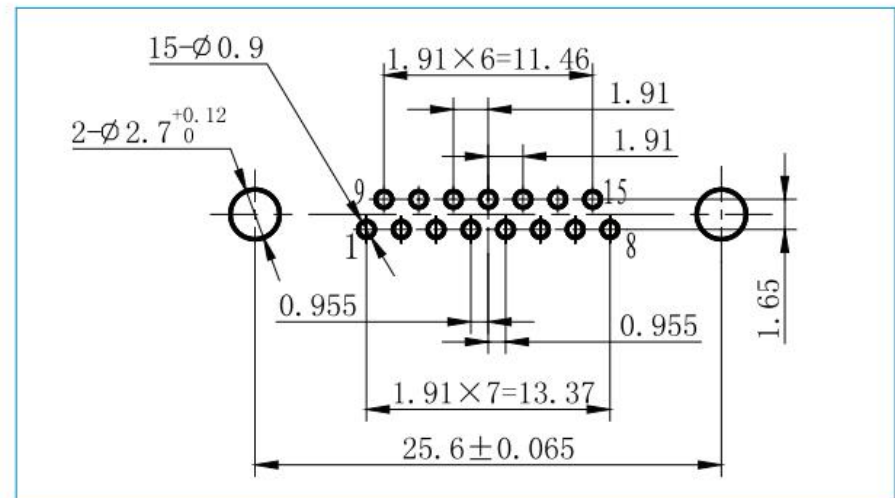
■ J29A-9ZKN



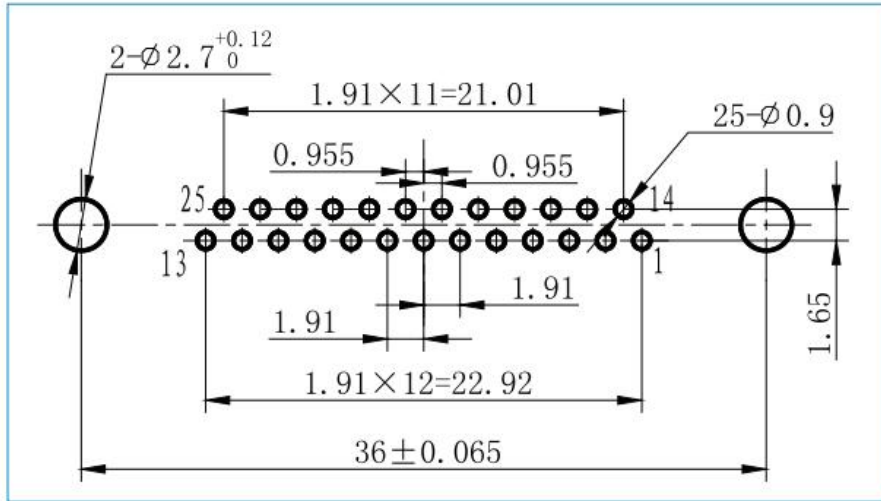
■ J29A-15TJN



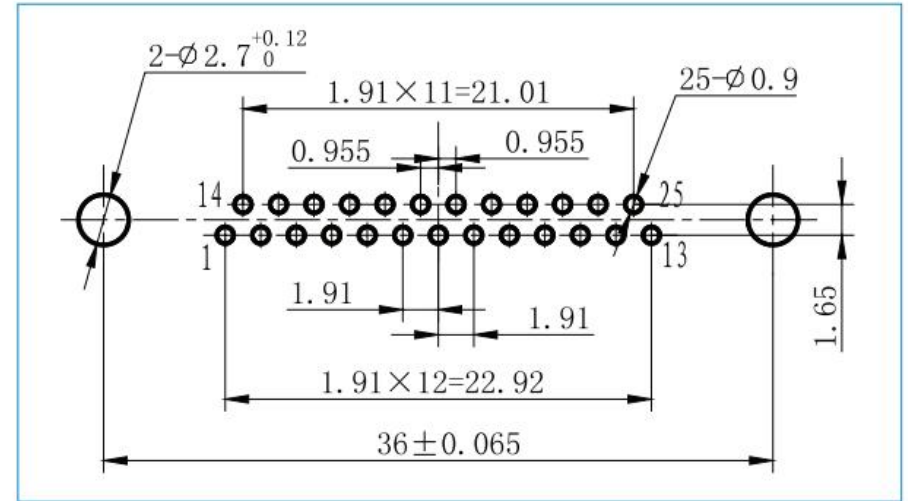
■ J29A-15ZKN



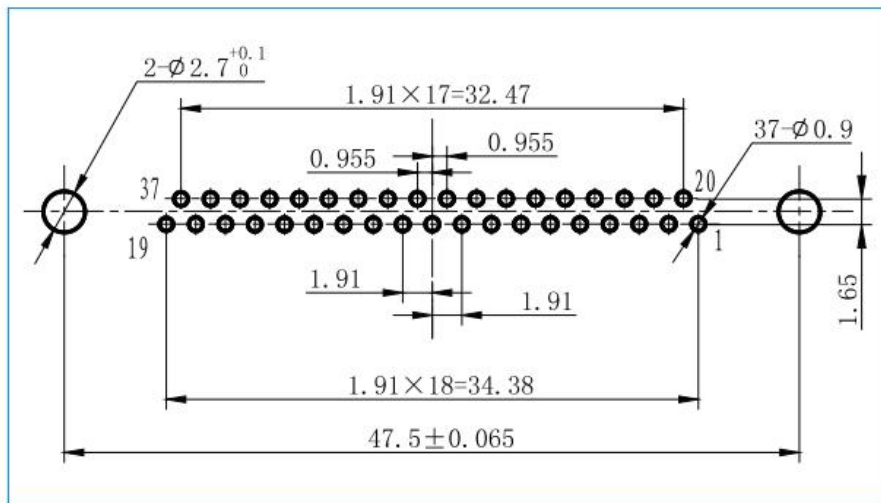
J29A-25TJN



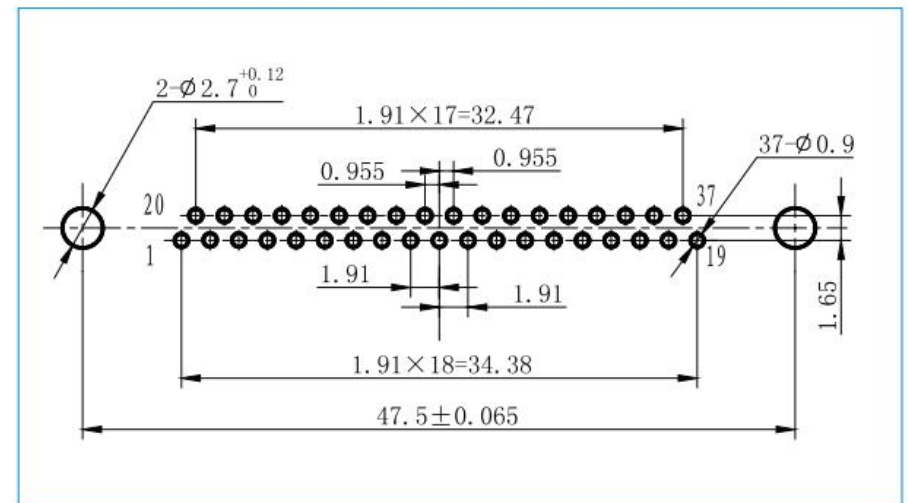
J29A-25ZKN



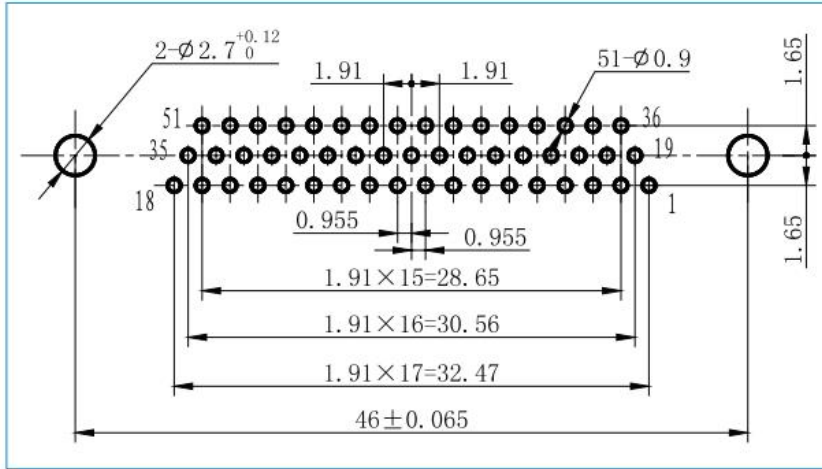
J29A-37TJN



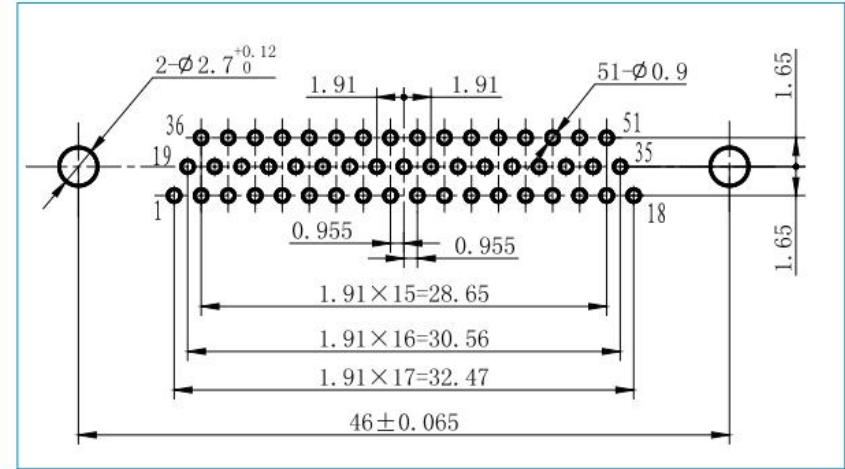
J29A-37ZKN



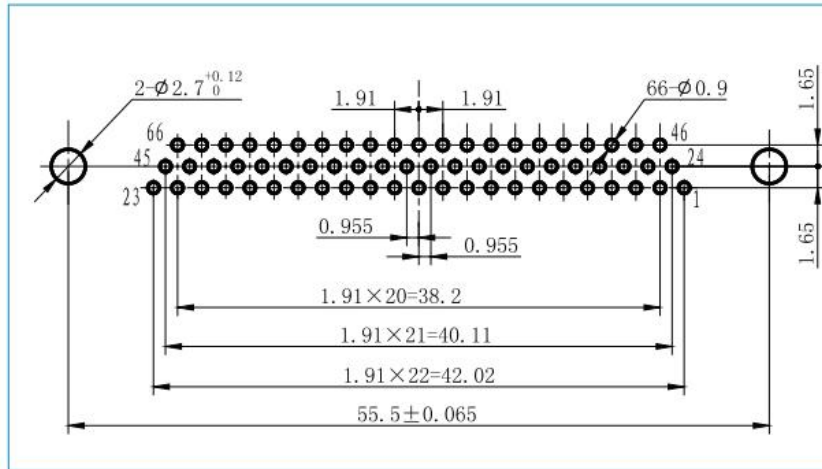
■ J29A-51TJN



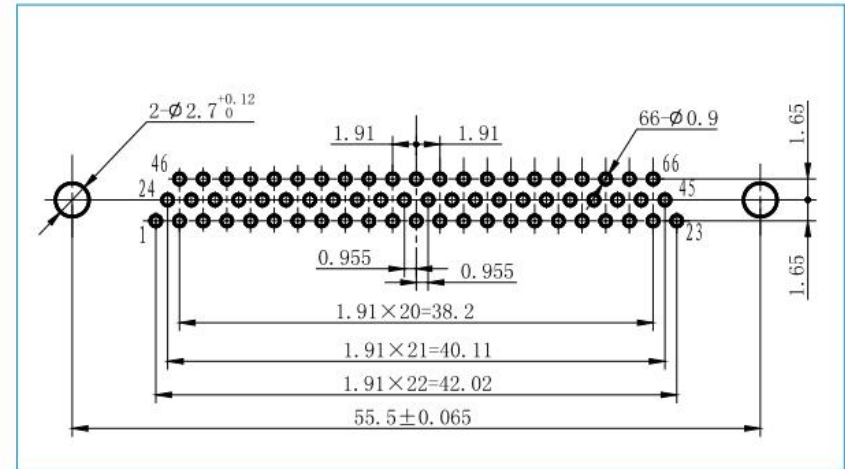
■ J29A-51ZKN



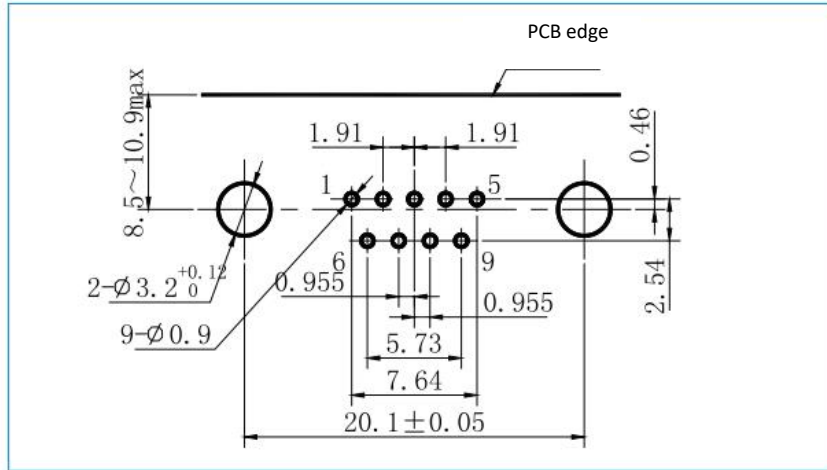
■ J29A-66TJN



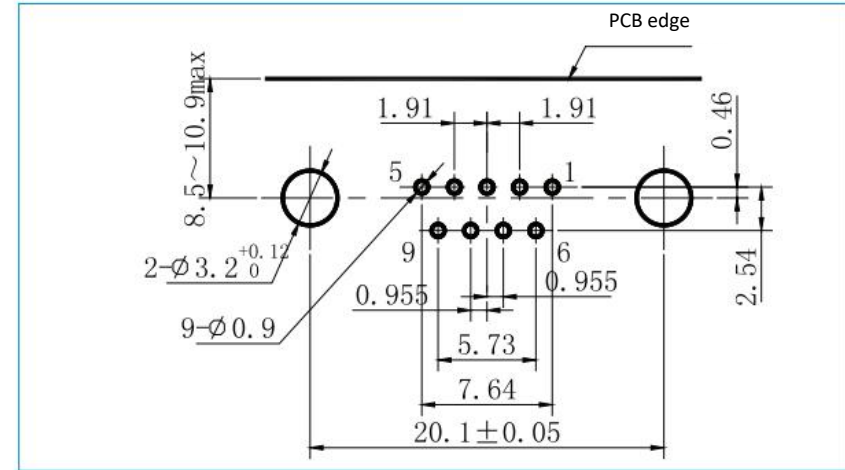
■ J29A-66ZKN



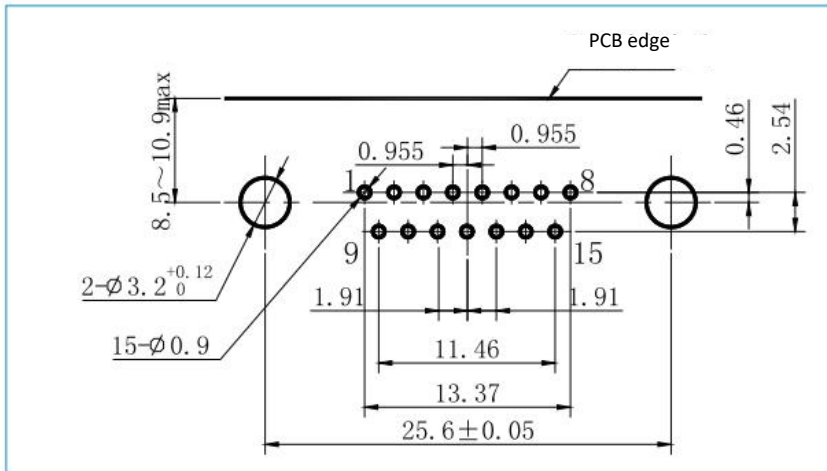
■ J29A-9TJW, J29A-9TJW-A



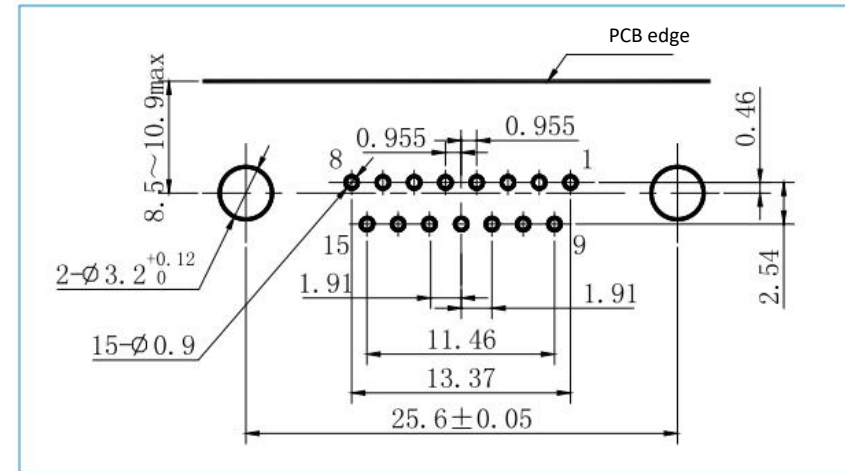
■ J29A-9ZKW, J29A-9ZKW-A



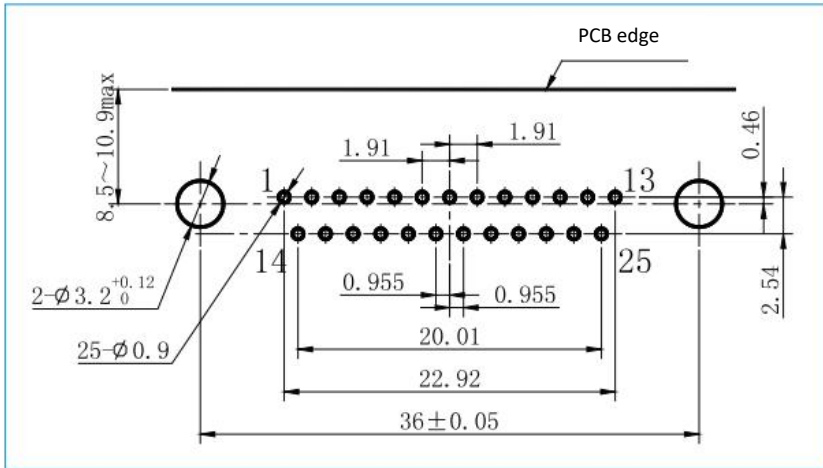
■ J29A-15TJW, J29A-15TJW-A



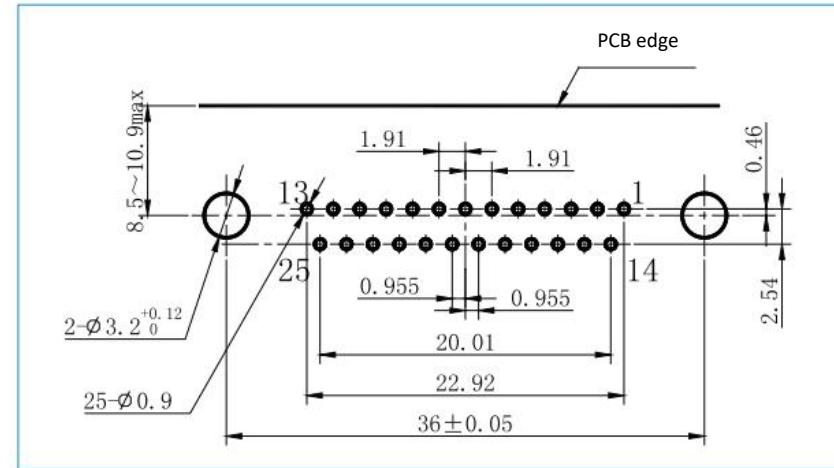
■ J29A-15ZKW, J29A-15ZKW-A



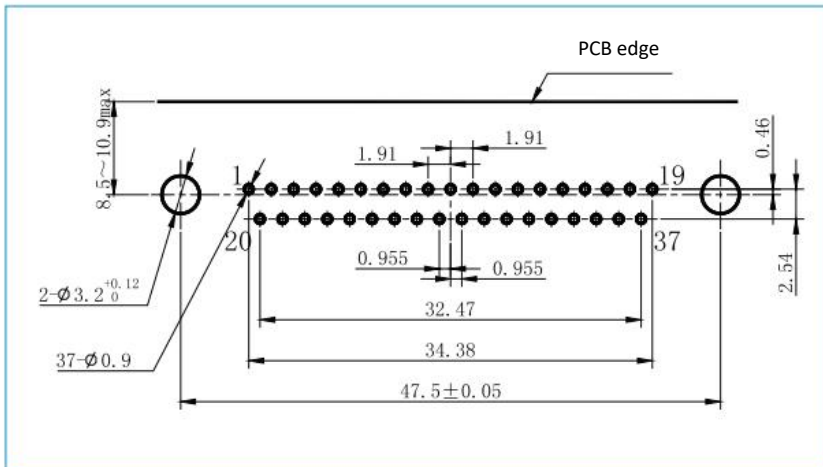
■ J29A-25TJW, J29A-25TJW-A



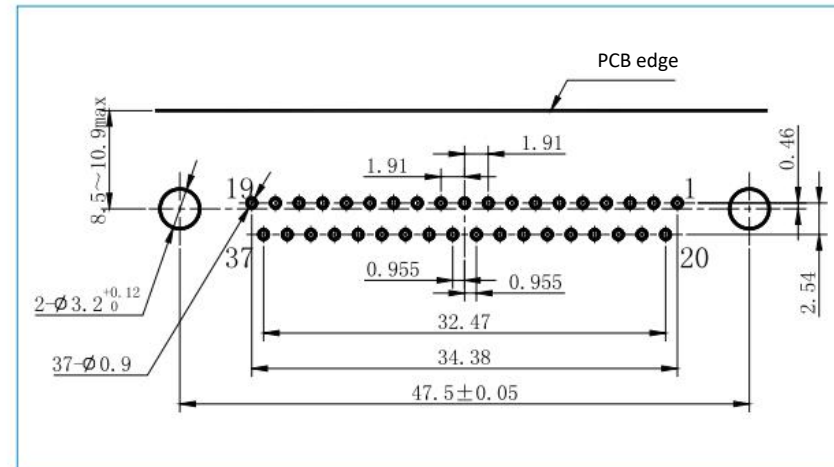
■ J29A-25ZKW, J29A-25ZKW-A



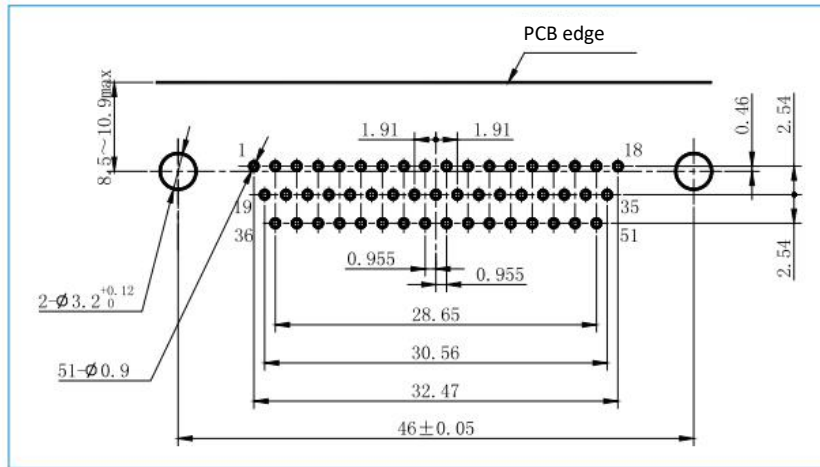
■ J29A-37TJW, J29A-37TJW-A



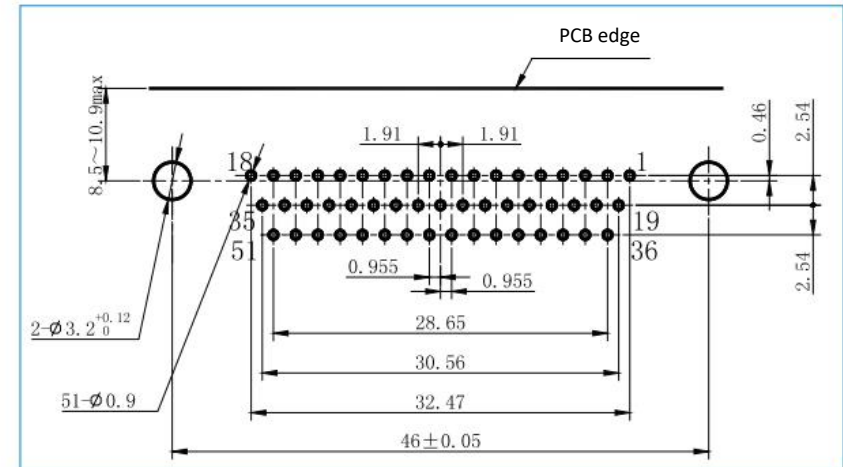
■ J29A-37ZKW, J29A-37ZKW-A



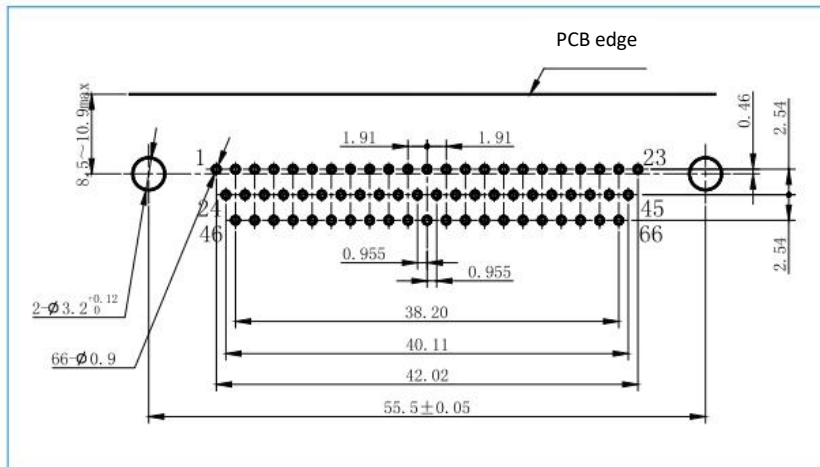
■ J29A-51TJW、J29A-51TJW-A



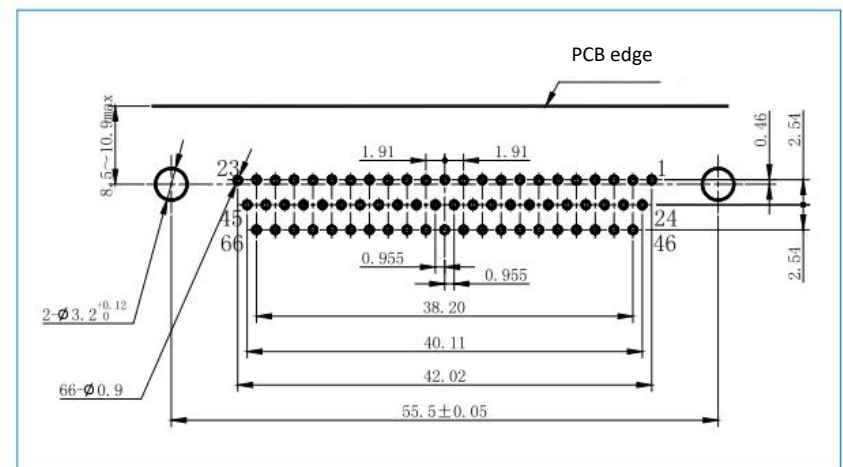
■ J29A-51ZKW、J29A-51ZKW-A



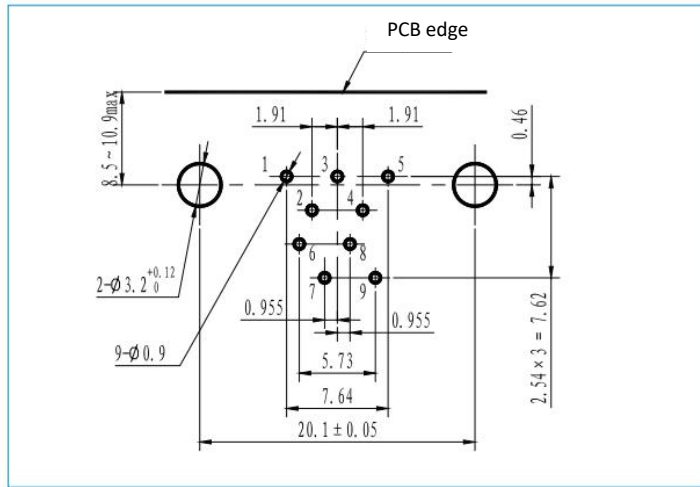
■ J29A-66TJW、J29A-66TJW-A



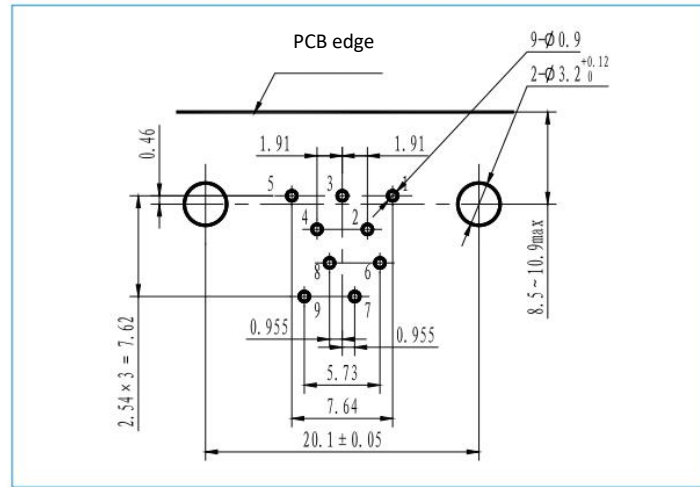
■ J29A-66ZKW、J29A-66ZKW-A



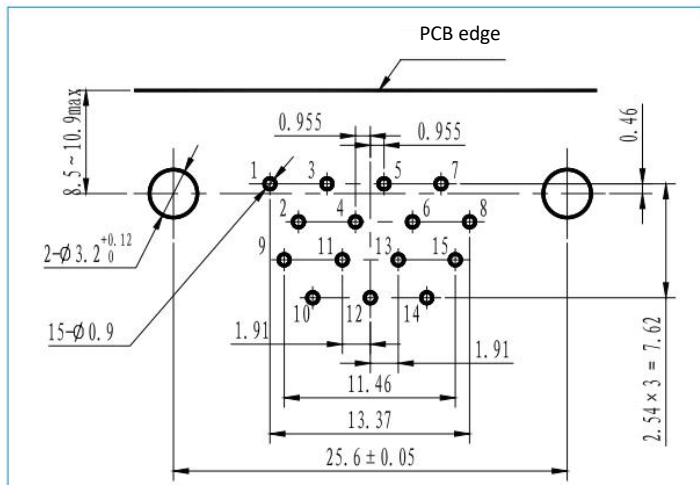
■ J29A-9TJWI, J29A-9TJWI-A



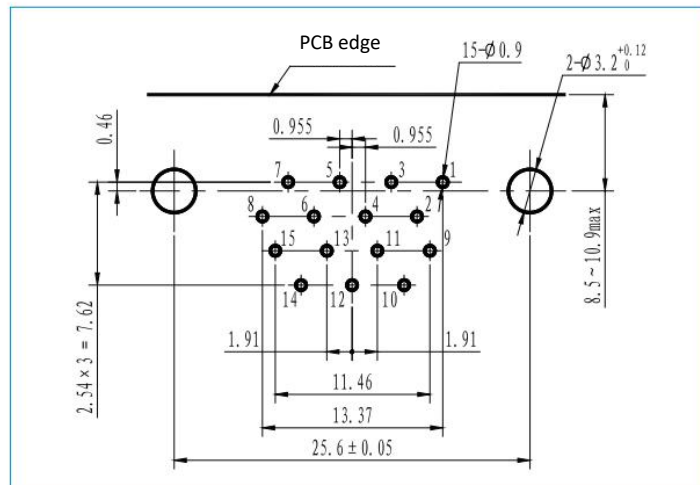
■ J29A-9ZKWI, J29A-9ZKWI-A



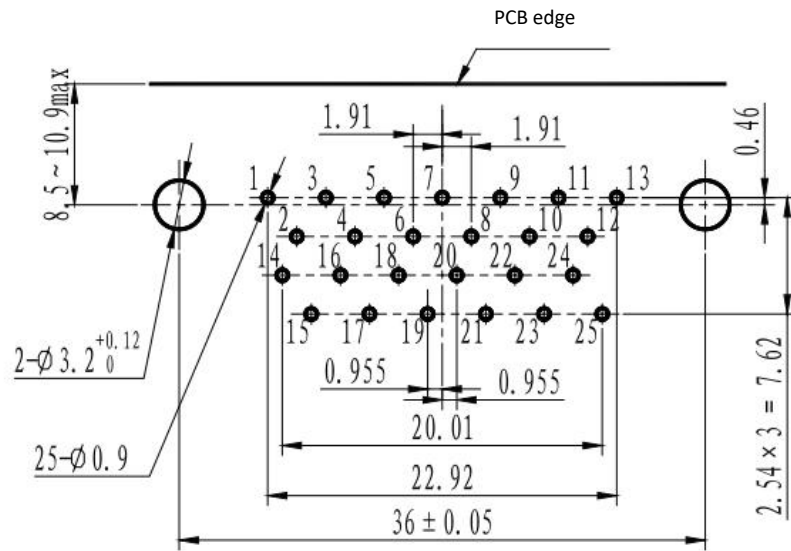
■ J29A-15TJWI, J29A-15TJWI-A



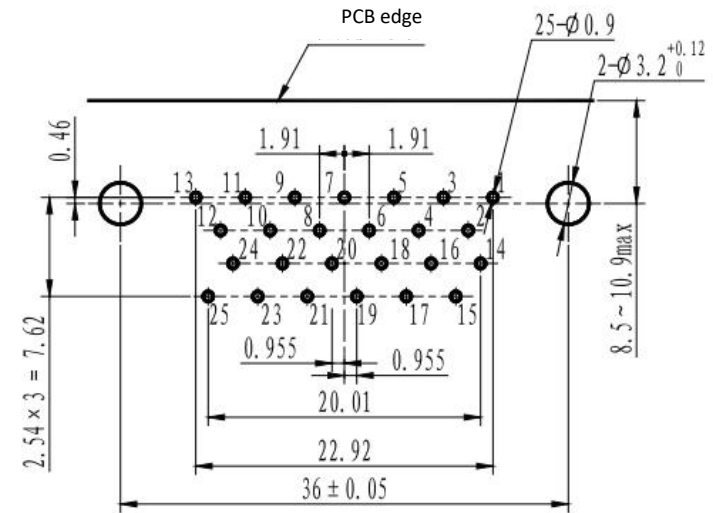
■ J29A-15ZKWI, J29A-15ZKWI-A

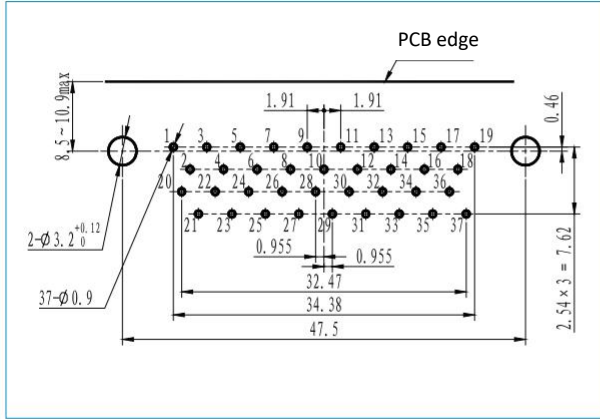
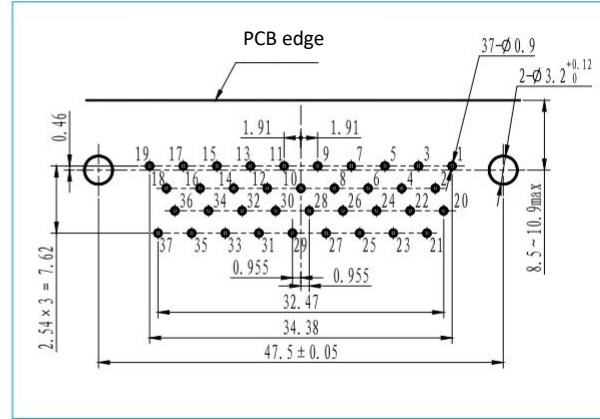
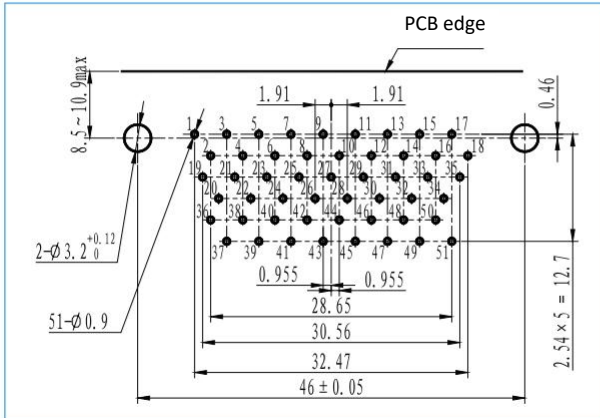
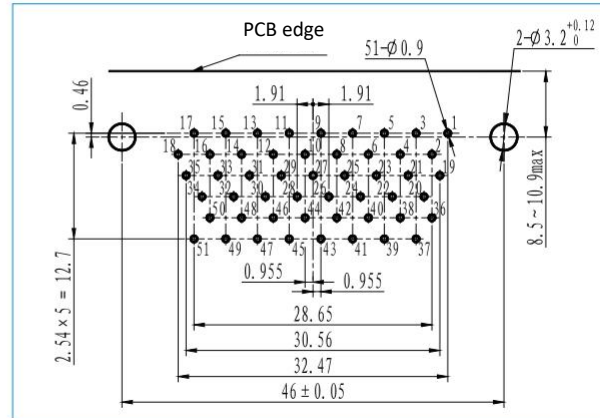


■ J29A-25TJWI、J29A-25TJWI-A

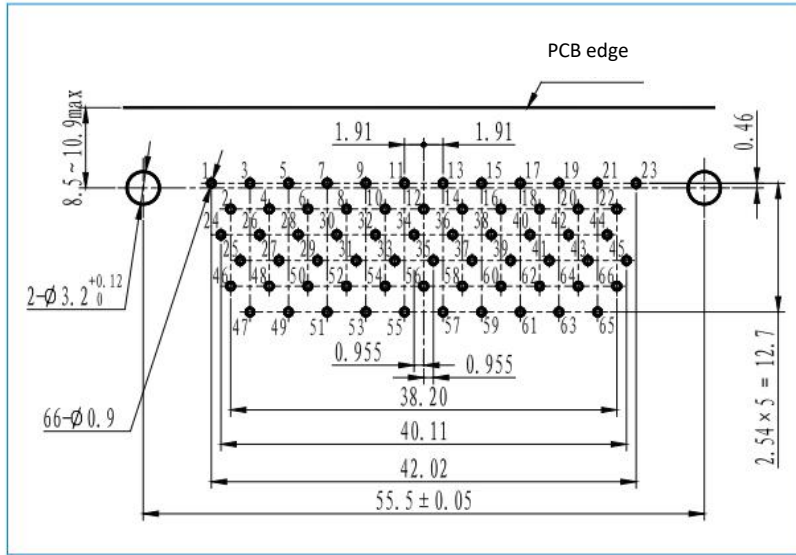


■ J29A-25ZKWI、J29A-25ZKWI-A



J29A-37TJWI, J29A-37TJWI-A

J29A-37ZKWI, J29A-37ZKWI-A

J29A-51TJWI, J29A-51TJWI-A

J29A-51ZKWI, J29A-51ZKWI-A


■ J29A-66TJWI, J29A-66TJWI-A



■ J29A-66ZKWI, J29A-66ZKWI-A

